



## **ADDENDUM # 1**

**TO :** All Bidders

**RE:** Turbeville Branch Library  
Turbeville, S.C.  
CGD Project No. 22067

**DATE:** September 19, 2025

To Bidders:

Please note the following changes or clarifications which shall become a part of the contract documents for the above referenced project.

### **GENERAL INFORMATION & CLARIFICATIONS:**

**G1 Pre-Bid attendee list :**

See attached copy of attendees at the non-mandatory pre-bid meeting held on 9/16/25 at 11:00 AM.

**G2 Low voltage cabling:**

The Owner shall provide low voltage cabling and all devices related to technology and security hardware through a separate vendor. The work of this contract includes all infrastructure related to technology and security as noted on the electrical drawings.

**G3 Materials testing and Chapter 17 special inspections:**

Materials Testing and Special Inspections shall be provided by a third party vendor to be selected by the Owner. See specification section 014000, Quality Requirements for further detail. See attached Chapter 17 IBC Special Inspection Requirements from Palmetto Structural Engineering, dated 9/14/25.

**G4 Building materials:**

Questions have been asked about the rationale for the choice of limestone veneer for the exterior facades. No substitutions or alternatives are being considered at this time.

### **DRAWINGS:**

**D1    All Sheets:**

Note in title block stating “ FOR REVIEW, NOT FOR CONSTRUCTION” has been removed from all drawings.

**D2    Sheet A101, A201, A301, A302, A401, A501, A502, A503, A601, A801:**

See clouded drawing revisions, noted as Mark 1, dated 9/17/25. All revised sheets are attached to this addendum.

**SPECIFICATIONS:****S1    Section 107500; Flagpoles; Page 3:**

Item 2.2.E – Delete line in its entirety.

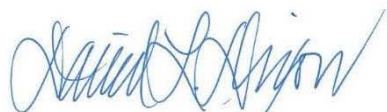
Item 2.2.G – Delete “Tow(2) poles.”

Item 2.3.C – Delete item in its entirety.

**END OF ADDENDUM #1**

Sincerely,

CRAIG GAULDEN DAVIS | PBK



David L. Dixon, AIA  
Senior Principal

Attachments:      Pre-Bid Meeting Attendee List  
                              Special Inspection Requirements  
                              Revised sheets:

- A101
- A201
- A301
- A302
- A401
- A501
- A502
- A503
- A601
- A801

**Clarendon County ITB 2025-003**  
**Construct Turbeville Library - Pre-Bid Meeting 09/16/2025**

#	VENDOR NAME	SIGNATURE	EMAIL ADDRESS
1	CHAMBERS + ASSOCIATES	Scott Waddell	scott@chambersmg.com
2	Harkins & Kolb	Shane Green	shane@hkco.net
3	JF Contractors	Jonathan Houston	jhouston@jfcontractors.com
4	Bunnell Lammons Engineering	Alex Skoler	alex.skoler@blecorp.com
5	Gilbert Construction	John Parker	john@gilbertconstruction.com
6			
7			
8			
9			
10			
11			
12			
13			
14			
15			



## Statement of Special Inspections

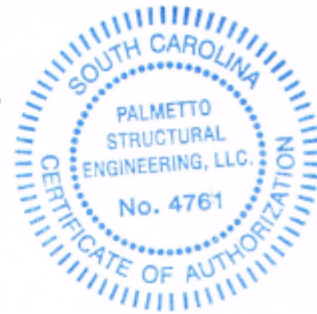
September 14, 2025

**David Dixon, AIA**  
Principal  
**Office:** 864.242.0761  
Greenville | Baltimore

**CRAIG  
GAULDEN  
DAVIS**



**Project:** Turbeville Library  
Turbeville, SC



Mr. Dixon, AIA:

The lateral-force resisting system for the building referenced above consists of light gage strap bracing designed by the contractor's engineer (delegated design). The following items are required to be inspected as part of the Chapter 17 IBC Special Inspections:

1. Reinforcing size/placement at foundations shall be visually inspected.
2. All light gage exterior and interior loadbearing wall base connections shall be visually reviewed.
3. All truss holdown connections shall be visually reviewed.
4. All top and bottom track connections shall be visually reviewed,
5. All CMU foundation wall construction shall be reviewed, including reinforcing and grout fill.
6. All light gage strap bracing must be entirely reviewed to ensure conformance with the delegated engineer's design requirements.
7. All light gage header construction shall be visually reviewed.

If you have any questions or comments, please don't hesitate to contact me at (864) 436-8684.

Sincerely,

M. Ryan Summey, P.E.



ACCESSORY LEGEND

MB1 4' x 8' MARKER BOARD  
MB2 4' x 8' MARKER BOARD  
TB1 4' x 8' TACK BOARD  
PB1 4'-1" x 5'-7" PROMETHEAN BOARD  
PS1 5' WIDE PROJECTION SCREEN  
PS2 8' WIDE PROJECTION SCREEN  
P1 OVERHEAD PROJECTOR  
M1 24" x 36" MIRROR  
M2 24" x 48" MIRROR  
CH COAT HOOK

FLOOR PLAN LEGEND

0 COLUMN GRID  
N NORTH ARROW  
TRUE NORTH  
Room name  
101 ROOM TAG  
SIM SECTION / ELEVATION CALLOUT  
A101  
Name  
Elevation  
W1 WINDOW TAG  
C CENTER LINE  
NEW DOOR WITH DOOR TAG  
EXISTING DOOR  
FIRE EXTINGUISHER CABINET  
FEC(R) RECESSED  
FEC(S) SEMI RECESSED  
FEC(F) FLUSH MOUNTED  
FEB BRACKET MOUNTED  
FLOOR DRAIN  
ELECTRIC WATER COOLER

WALL LEGEND

EXISTING WALL  
CONCRETE  
CONCRETE MASONRY  
METAL STUD WALL WITH GYPSUM WALL BOARD  
1 HOUR RATED  
2 HOUR RATED  
3 HOUR RATED

WALL LEGEND NOTES:  
1. INTERIOR WALLS SHALL BE TYPE \_\_\_\_\_ UNLESS NOTED OTHERWISE.  
2. PROVIDE J-MOLD WITH CAULK AND BACKER ROD JOINT WHERE GWB ABUTS DISSIMILAR MATERIALS SUCH AS CMU AND GWB.

WALL TYPES LEGEND

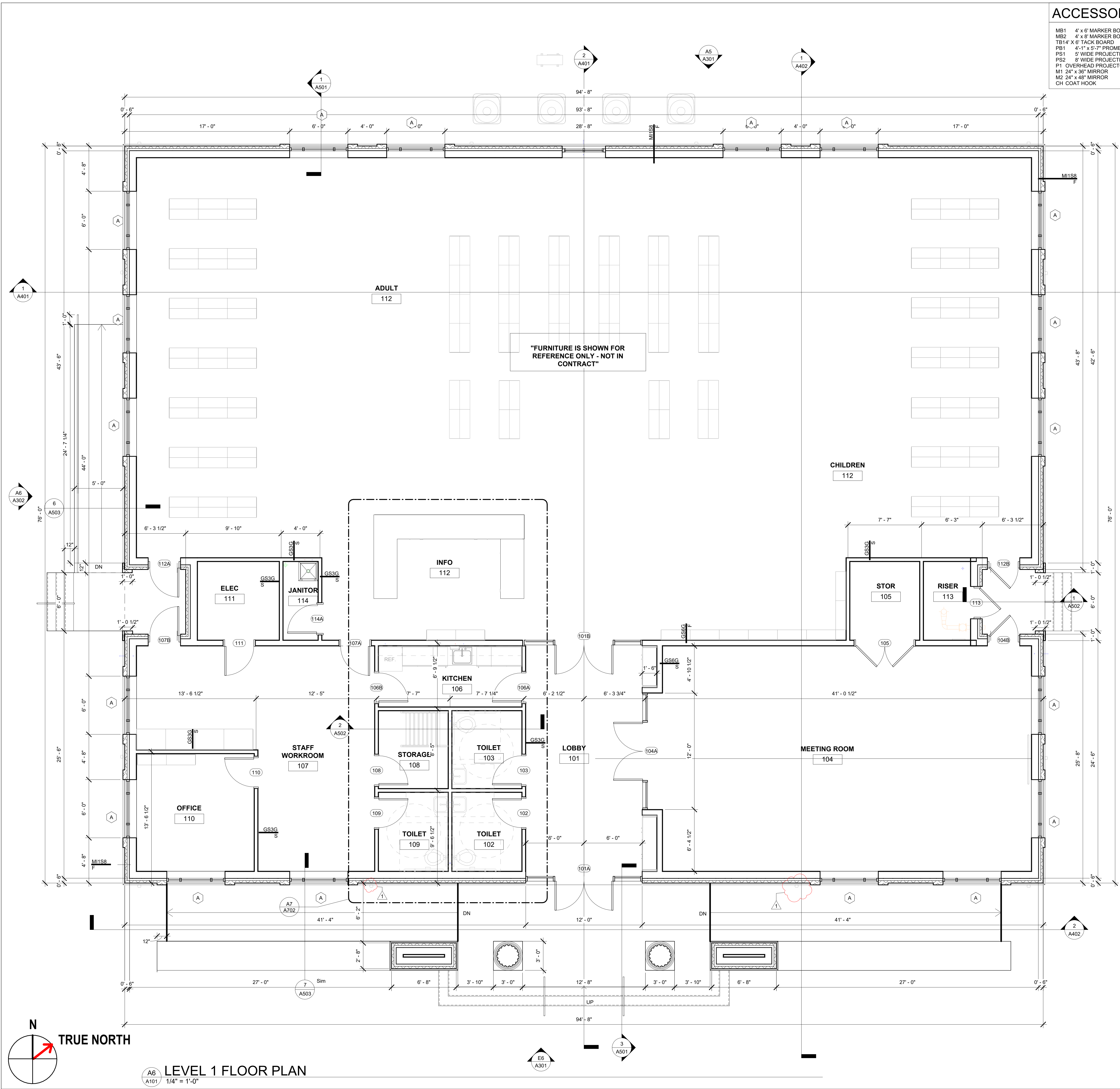
FACING:  
F Furring - 7/8" METAL HAT CHANNEL W/ 5/8" GWB  
G Gypsum - 5/8" GWB  
STRUCTURE:  
C Concrete  
M Masonry  
S Metal Stud  
SW Shaft Wall  
TP Toilet Partition  
W Wood Stud  
WALL MODIFIER:  
A Abuse resistant  
F Full height - extend to structure above  
P Partial height - extend six inches above ceiling  
S Sound - attenuation batt insulation

KEY NOTE LEGEND

01 CORNER GUARD  
02 FOLDING PANEL PARTITION  
03 LINE OF SOFFIT ABOVE

GENERAL FLOOR PLAN NOTES

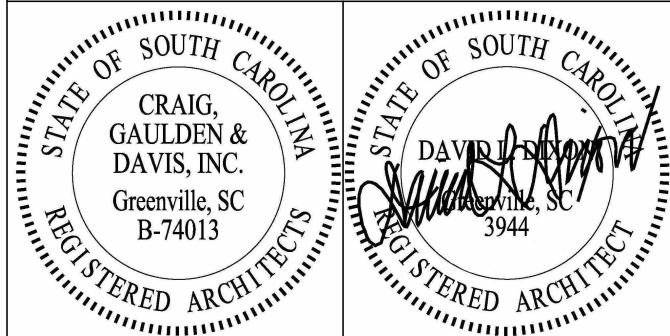
- Unless noted otherwise in the contract documents, dimensions identify:  
a. the centerline of columns and structural steel components,  
b. the centerline of interior studs,  
c. the face of exterior studs and/or  
d. the face of masonry and concrete walls.
- All masonry dimensions indicate nominal dimensions. The contractor shall make proper allowances for joint materials in laying out the walls.
- Provide code approved wood blocking or sheet metal plates in hollow wall systems for attachment of any wall mounted accessories including, but not limited to, shelving, casework, toilet accessories, toilet partitions, light fixtures, benches, coat rods, televisions, audio-visual equipment, security cameras, sliding door tracks, marker boards, and mirrors.
- Wall accessories such as fire extinguisher cabinets and paper towel dispensers that require a semi-recessed installation shall not reduce the fire rating of the wall. If a detail is not provided within the contract documents, the contractor shall consult the architect for proper details prior to installing the device.
- Walls indicated by the finish schedule to be painted where no ceiling is indicated shall be painted to the upper limits of the wall construction. Refer to the finish schedule for painting of exposed structure and mechanical/electrical components.
- All CMU walls, fire rated walls and sound rated partitions shall extend from finish floor to the underside of structural deck above. The top, bottom, sides and all piping and duct penetrations shall be sealed with appropriate fire resistive materials according to the applicable U.L. design assembly noted on the contract documents.
- Unless noted otherwise in the contract documents by a wall type or specific note, all non-rated stud partitions shall extend to the deck above.
- All metal studs shall be attached with 2 screws at 16" o.c. in the bottom and top tracks.
- All exterior corners and ends of gypsum wall board partitions shall have metal corner beads unless noted otherwise.



LEVEL 1 FLOOR PLAN

1/4" = 1'-0"





CONSULTANT

HARVIN CLARENDON COUNTY LIBRARY

TURBEVILLE BRANCH LIBRARY

1178 Smith Street  
Turbeville, S.C. 29162

DATE	MARK	DESCRIPTION
09/17/2025	1	GENERAL REVISIONS

ISSUE: CONSTRUCTION DOCUMENTS		
DATE:	08/29/2025	
PROJECT NO:	22067	
DRAWN BY:	SHZ	
CHECKED BY:	DLD	

DOOR AND WINDOW SCHEDULES

A201

Door Schedule										
ROOM NUMBER	DOOR NUMBER	DOOR			FRAME			HEAD	JAMB	HARDWARE
		WIDTH	HEIGHT	TYPE	MATL	TYPE	MATL			
101	101A	6' - 0"	7' - 10"	C	ALUM	A2/A501	ALUM			01
101	101B	6' - 0"	7' - 5"	C	ALUM	A2/A501	ALUM			02
101	102	3' - 0"	7' - 0"	A	SCW	F1	HM			03
103	103	3' - 0"	7' - 0"	A	SCW	F1	HM			03
104	104A	6' - 0"	7' - 5"	C	ALUM	A2/A501	ALUM			04
104	104B	3' - 0"	6' - 8"	A	SCW	F2	HM			05
105	105	6' - 0"	7' - 0"	A	SCW	F1	HM			06
106	106A	3' - 0"	7' - 0"	B	SCW	F1	HM			07
106	106B	3' - 0"	7' - 0"	B	SCW	F1	HM			07
112	107A	3' - 0"	7' - 0"	B	SCW	F1	HM			08
107	107B	3' - 0"	6' - 8"	A	SCW	F2	HM			09
107	108	3' - 0"	7' - 0"	A	SCW	F1	HM			10
109	109	3' - 0"	7' - 0"	A	SCW	F1	HM			03
110	110	3' - 0"	7' - 0"	B	SCW	F1	HM			11
107	111	3' - 0"	7' - 0"	A	SCW	F1	HM			12
112	112A	3' - 0"	6' - 8"	A	SCW	F2	HM			05
112	112B	3' - 0"	6' - 8"	A	SCW	F2	HM			05
113	113	3' - 0"	6' - 8"	A	SCW	F2	HM			13
114	114A	3' - 0"	7' - 0"	A	SCW	F1	HM			10

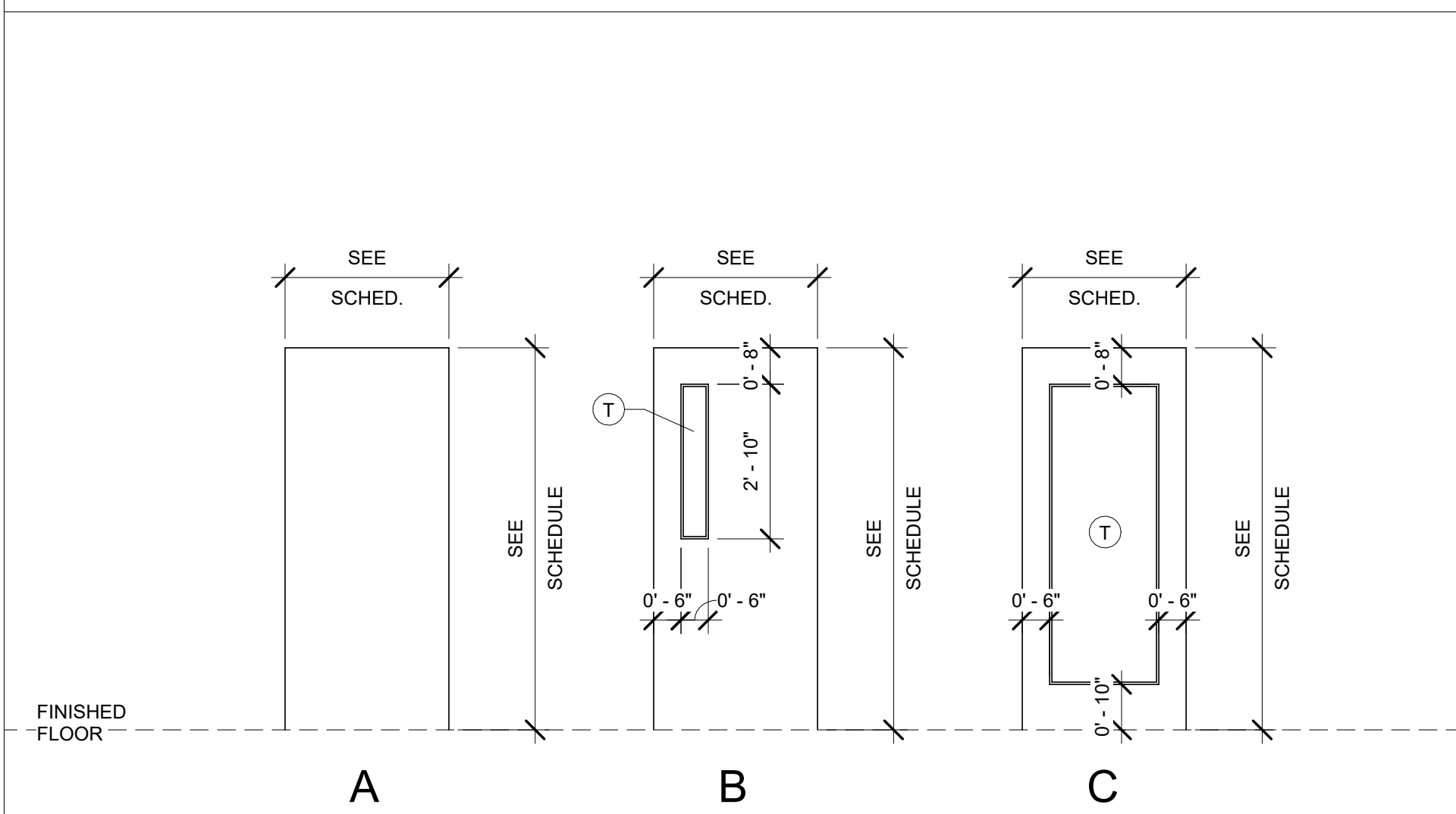
### GLAZING LEGEND

GLF - X	SAFETY GLAZING TYPE
	GENERAL GLAZING TYPE
GL1	INTERIOR GLAZING (SEE SPECS)
GL2	EXTERIOR GLAZING (SEE SPECS)
T	TEMPERED SAFETY GLASS
W	WIRED SAFETY GLASS
NOTE: SEE SPECIFICATIONS FOR DETAILED DESCRIPTIONS OF THE VARIOUS GLAZING TYPES.	

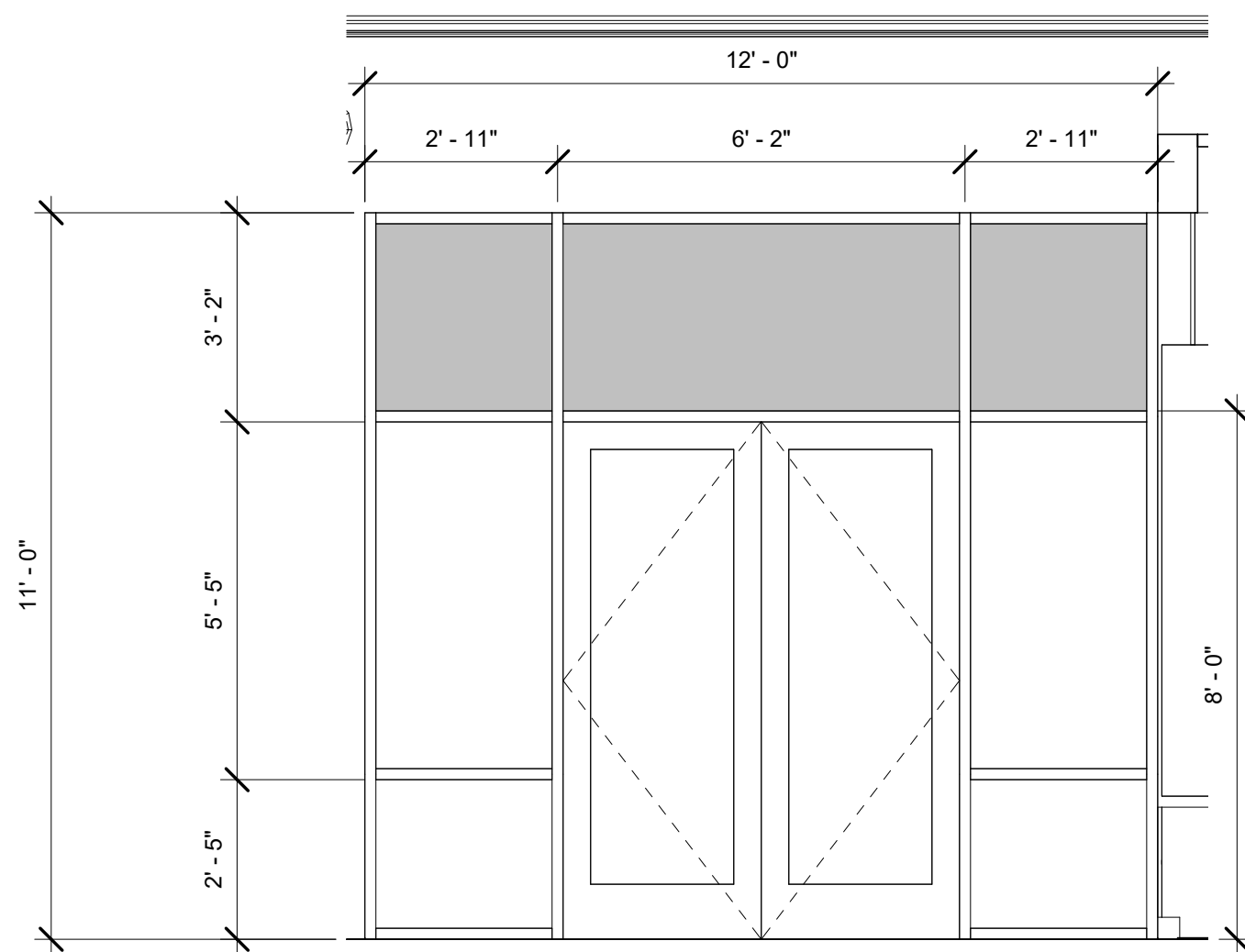
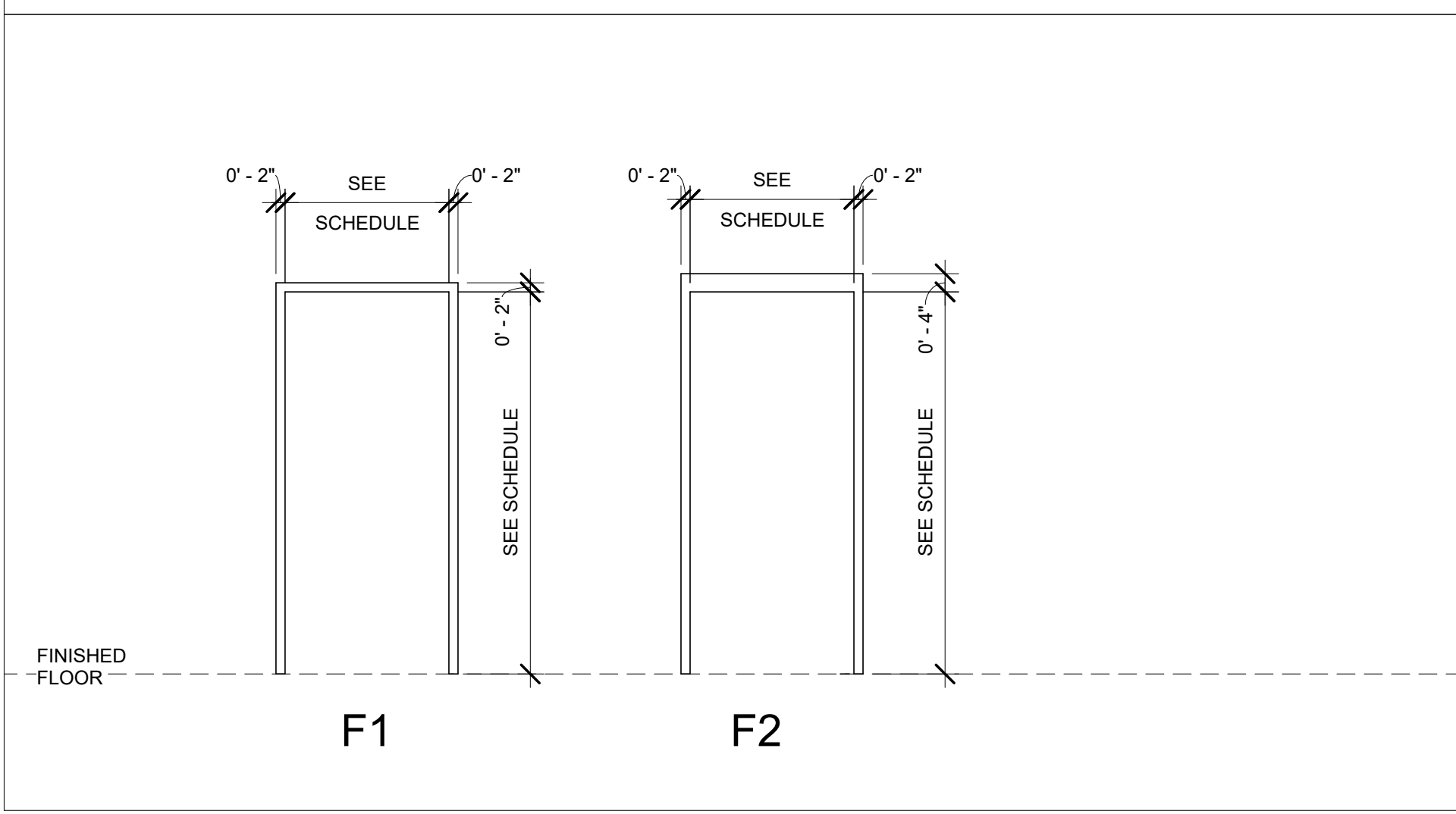
### DOOR ABBREVIATION LEGEND

HM	HOLLOW METAL
SCW	SOLID CORE WOOD
TEMP	TEMPERED
PR	PAIR
ALUM	ALUMINUM

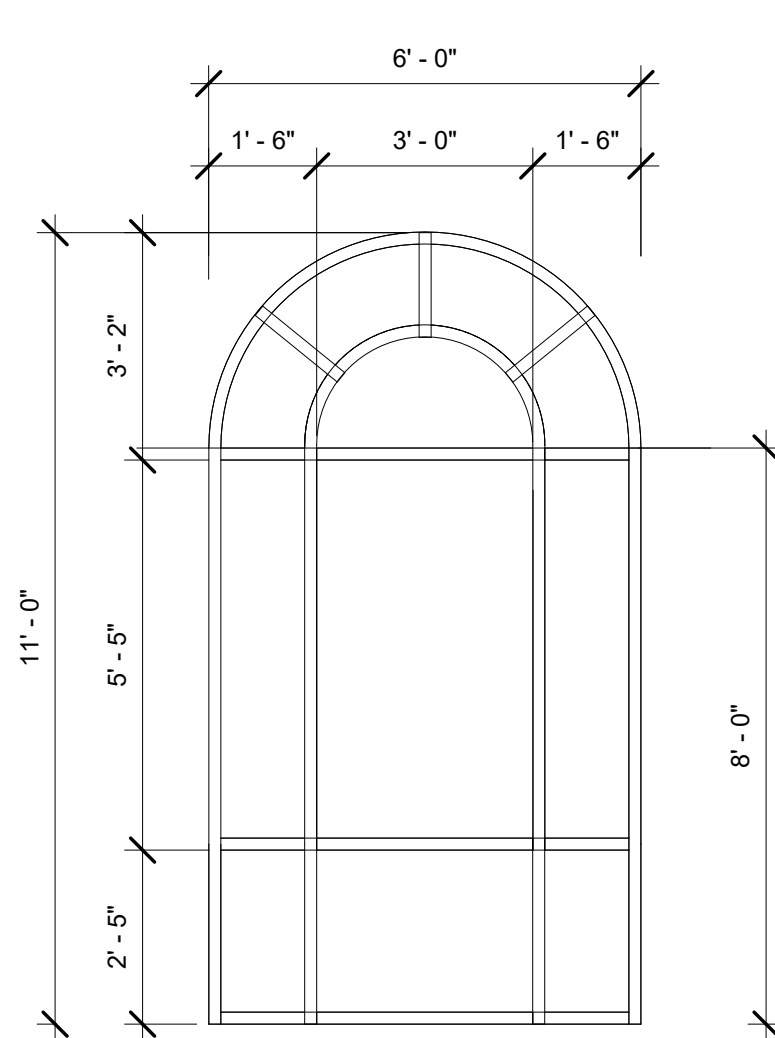
### DOOR LEGEND



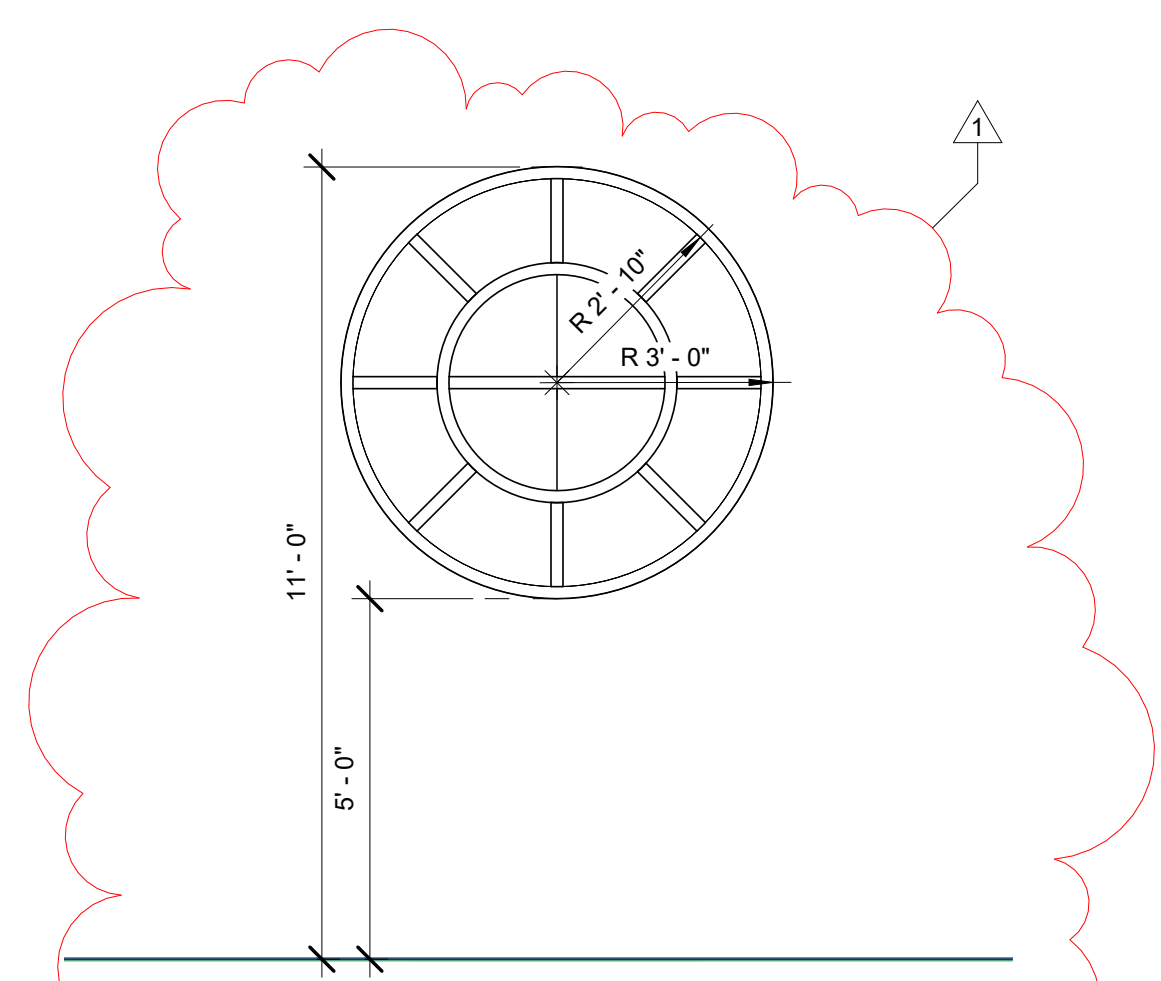
### FRAME LEGEND



A5 A201 DOOR 101A/101B/104A  
3/8" = 1'-0"



A3 A201 STOREFRONT A  
3/8" = 1'-0"



A2 A201 STOREFRONT B  
3/8" = 1'-0"

HARVIN  
CLARENDON  
COUNTY  
LIBRARY

TURBEVILLE  
BRANCH LIBRARY

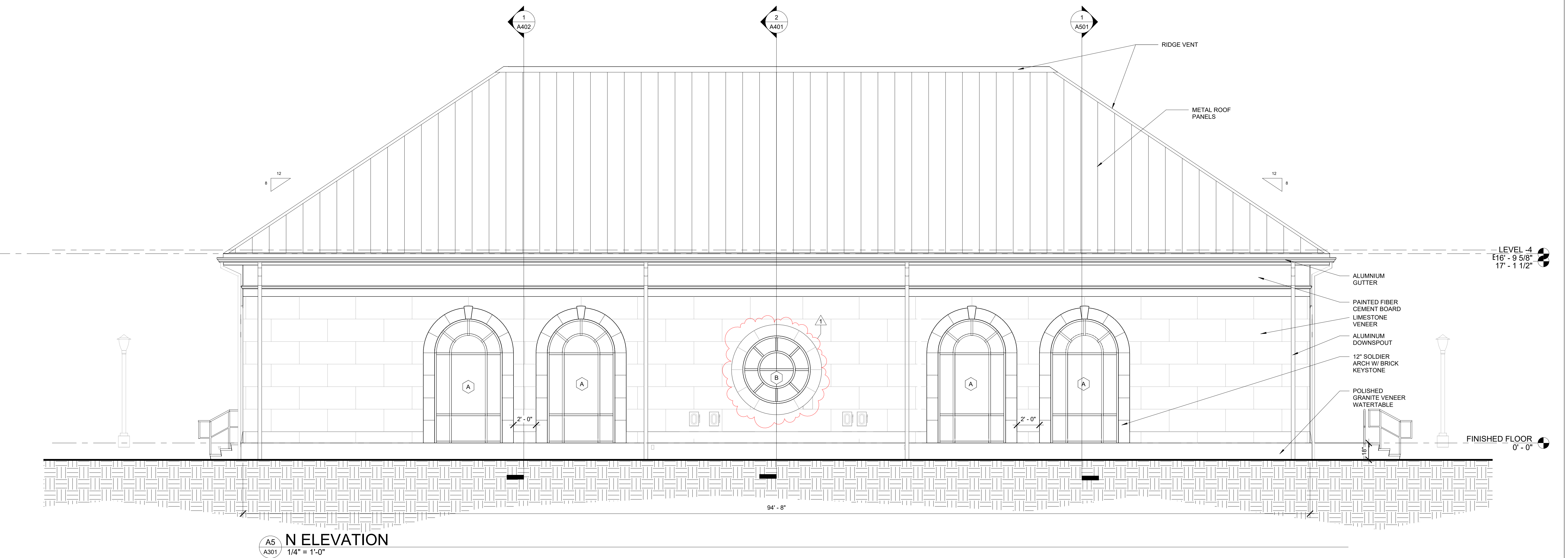
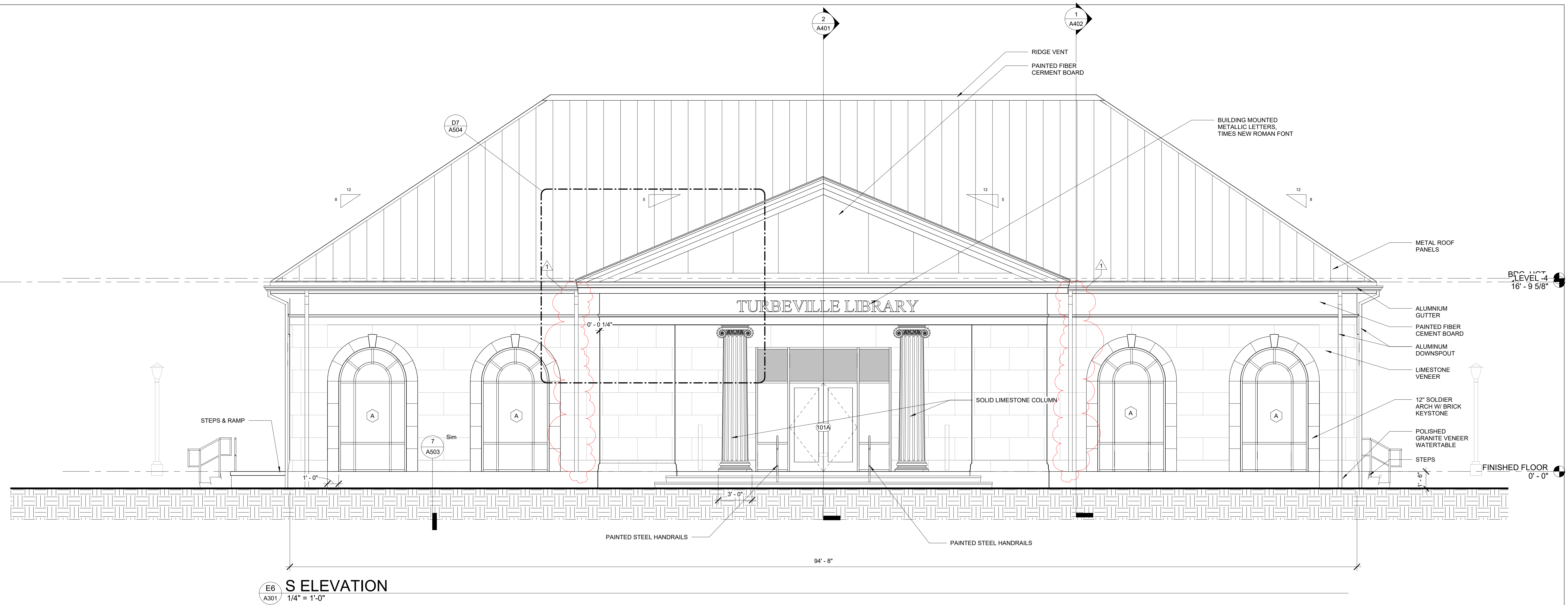
1178 Smith Street  
Turbeville, S.C. 29162

DATE	MARK	DESCRIPTION
09/17/2025	1	GENERAL REVISIONS

ISSUE: CONSTRUCTION DOCUMENTS  
DATE: 08/29/2025  
PROJECT NO: 22067  
DRAWN BY: SHZ  
CHECKED BY: DLD

EXTERIOR ELEVATIONS

A301





HARVIN  
CLARENDON  
COUNTY  
LIBRARY

TURBEVILLE  
BRANCH LIBRARY

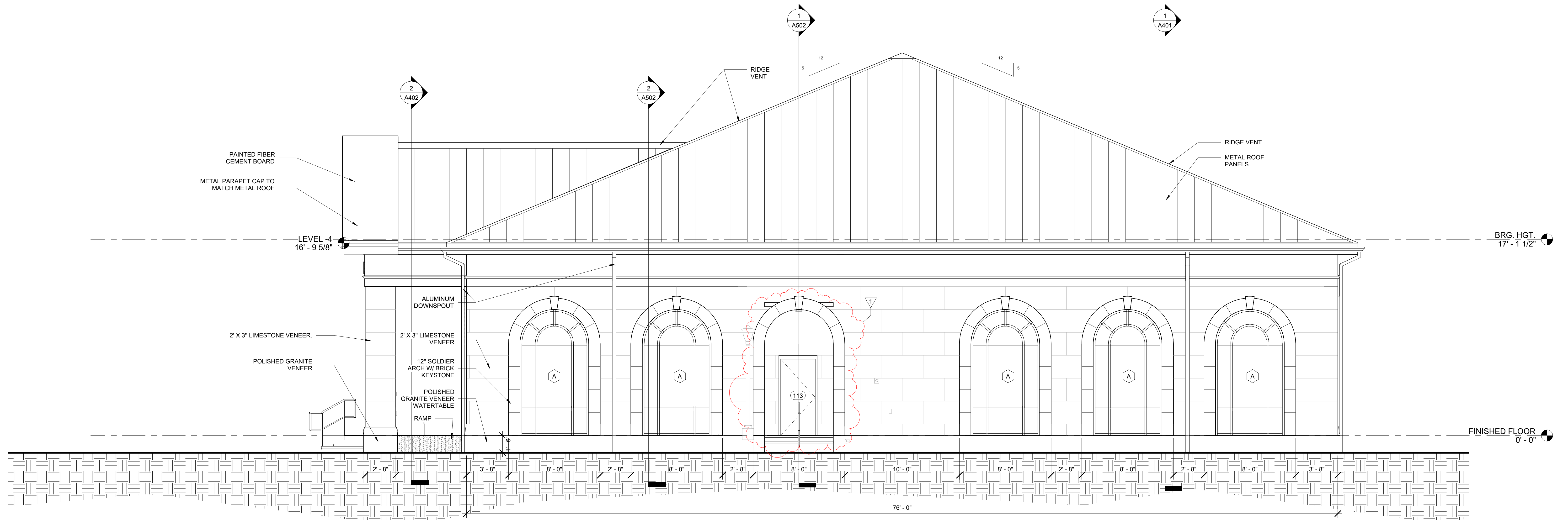
1178 Smith Street  
Turbeville, S.C. 29162

DATE	MARK	DESCRIPTION
09/17/2025	1	GENERAL REVISIONS

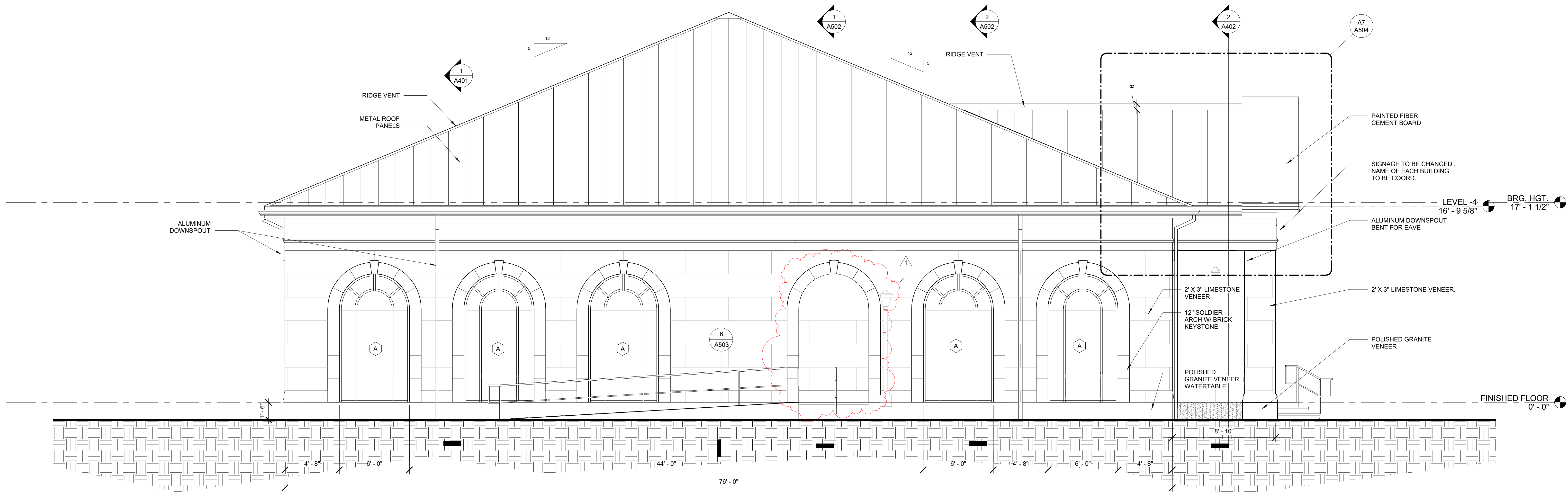
ISSUE: CONSTRUCTION DOCUMENTS  
DATE: 08/29/2025  
PROJECT NO: 22067  
DRAWN BY: SHZ  
CHECKED BY: DLD

EXTERIOR ELEVATIONS

A302



D6  
A302  
E ELEVATION  
1/4" = 1'-0"



A6  
A302  
W ELEVATION  
1/4" = 1'-0"



HARVIN  
CLARENDON  
COUNTY  
LIBRARY

TURBEVILLE  
BRANCH LIBRARY

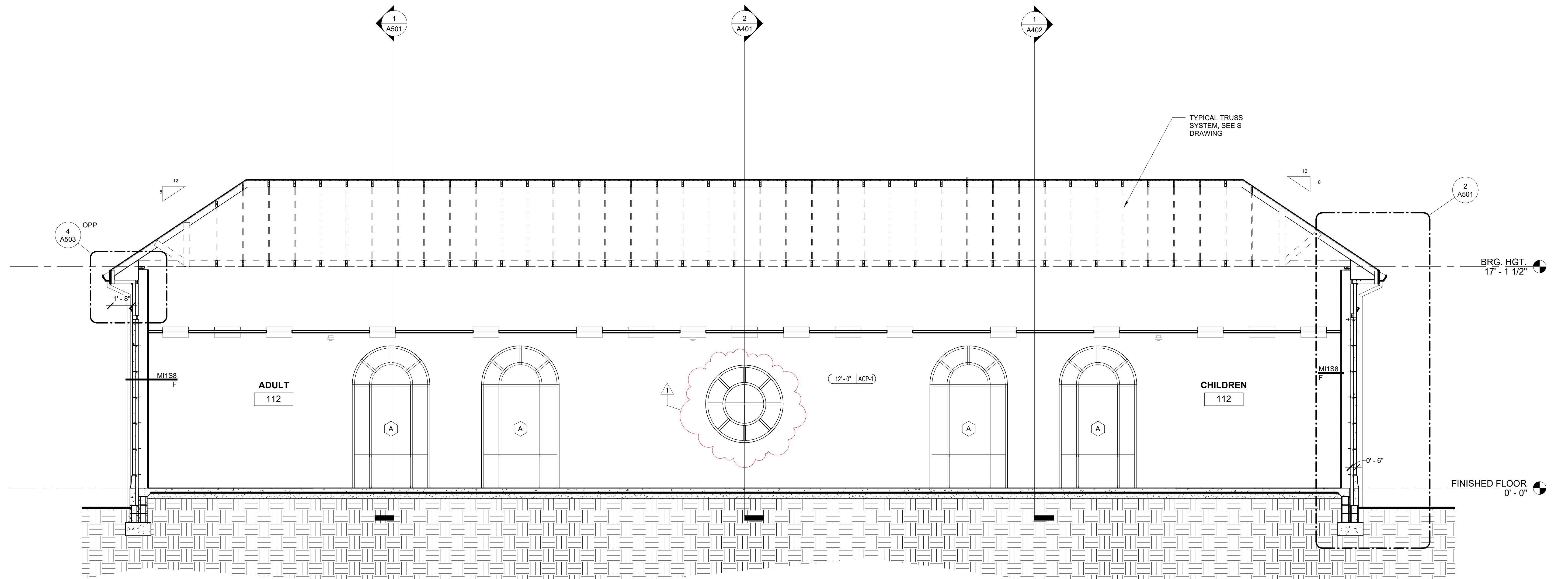
1178 Smith Street  
Turbeville, S.C. 29162

DATE	MARK	DESCRIPTION
08/17/2025	1	GENERAL REVISIONS

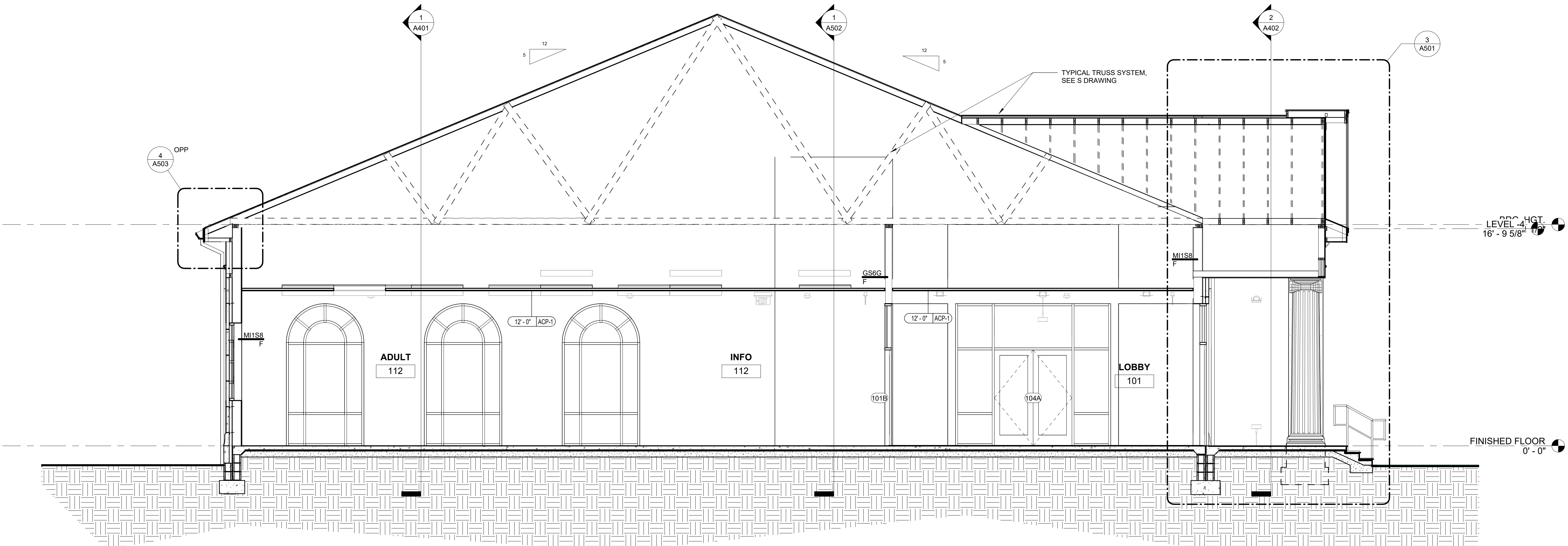
ISSUE: CONSTRUCTION DOCUMENTS  
DATE: 08/29/2025  
PROJECT NO: 22067  
DRAWN BY: SHZ  
CHECKED BY: DLD

BUILDING SECTIONS

A401



1 BUILDING SECTION - 1  
1/4" = 1'-0"



2 BUILDING SECTION - 2  
1/4" = 1'-0"



HARVIN CLARENDON COUNTY LIBRARY

TURBEVILLE BRANCH LIBRARY

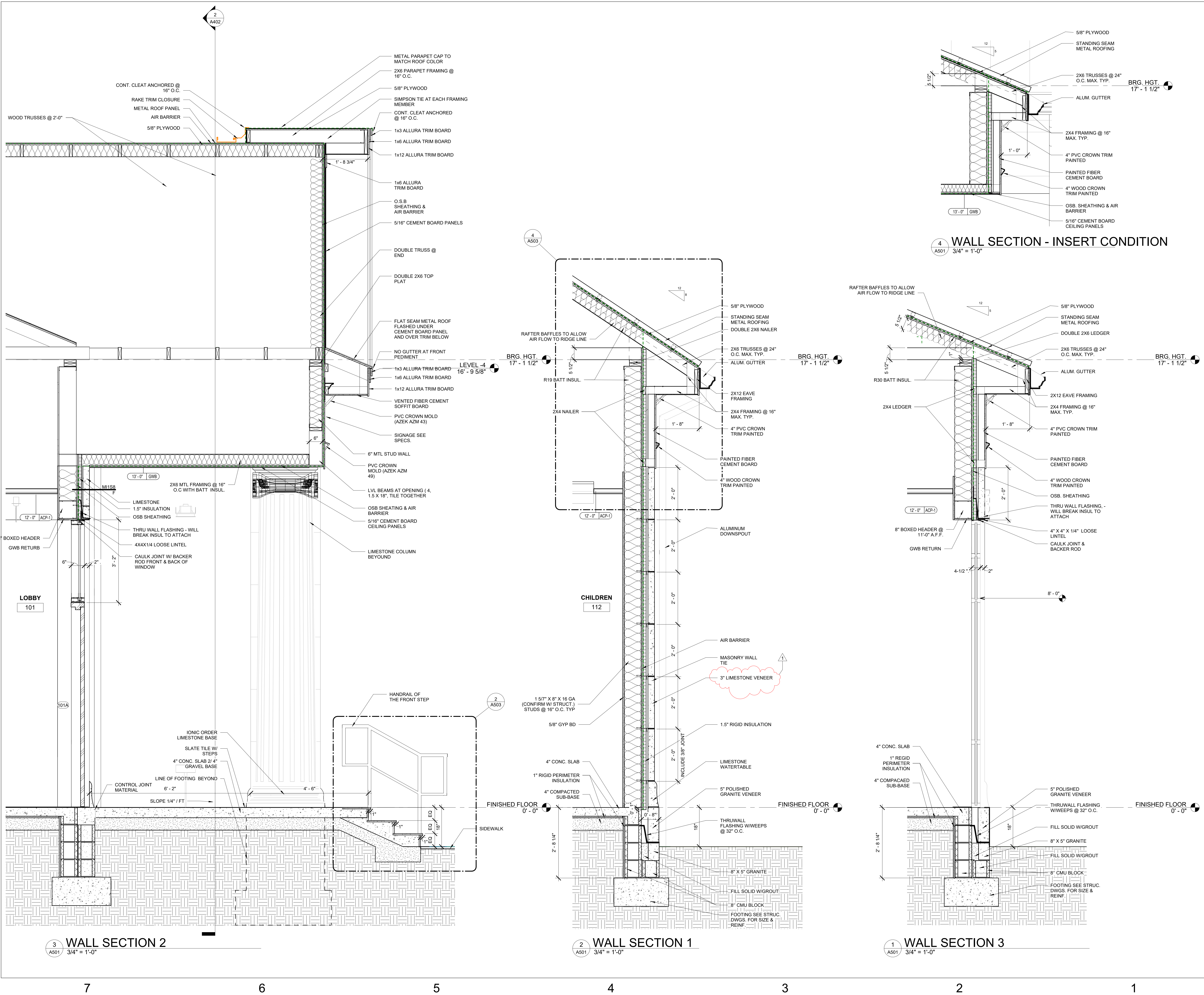
1178 Smith Street  
Turbeville, S.C. 29162

DATE	MARK	DESCRIPTION
09/17/2025	1	GENERAL REVISIONS

ISSUE: CONSTRUCTION DOCUMENTS
DATE: 08/29/2025
PROJECT NO: 22067
DRAWN BY: SHZ
CHECKED BY: DLD

WALL SECTIONS

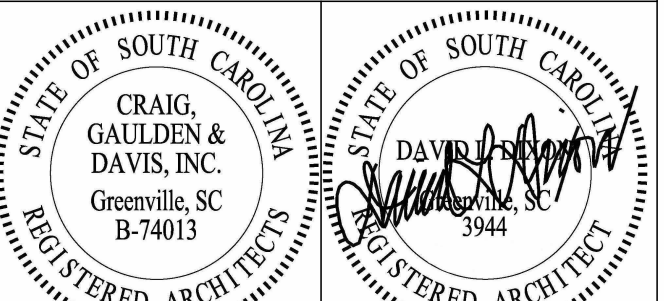
A501





COPYRIGHT © 2022 CRAIG GAULDEN & DAVIS, INC.  
ALL RIGHTS RESERVED

THIS COPYRIGHTED DOCUMENT AND ALL INFORMATION CONTAINED HEREIN IS AN INSTRUMENT OF SERVICE AND SHALL NOT BE REPRODUCED, ALTERED, OR REUSED IN PART OR IN WHOLE WITHOUT PRIOR WRITTEN PERMISSION FROM THE ARCHITECT. THIS DRAWING IS THE EXCLUSIVE PROPERTY OF THE ARCHITECT AND MUST BE RETURNED UPON REQUEST.



CONSULTANT

HARVIN  
CLARENDON  
COUNTY  
LIBRARY

TURBEVILLE  
BRANCH LIBRARY

78 Smith Street  
Greenville, S.C. 29162

DATE	MARK	DESCRIPTION
09/17/2025	1	GENERAL REVISIONS

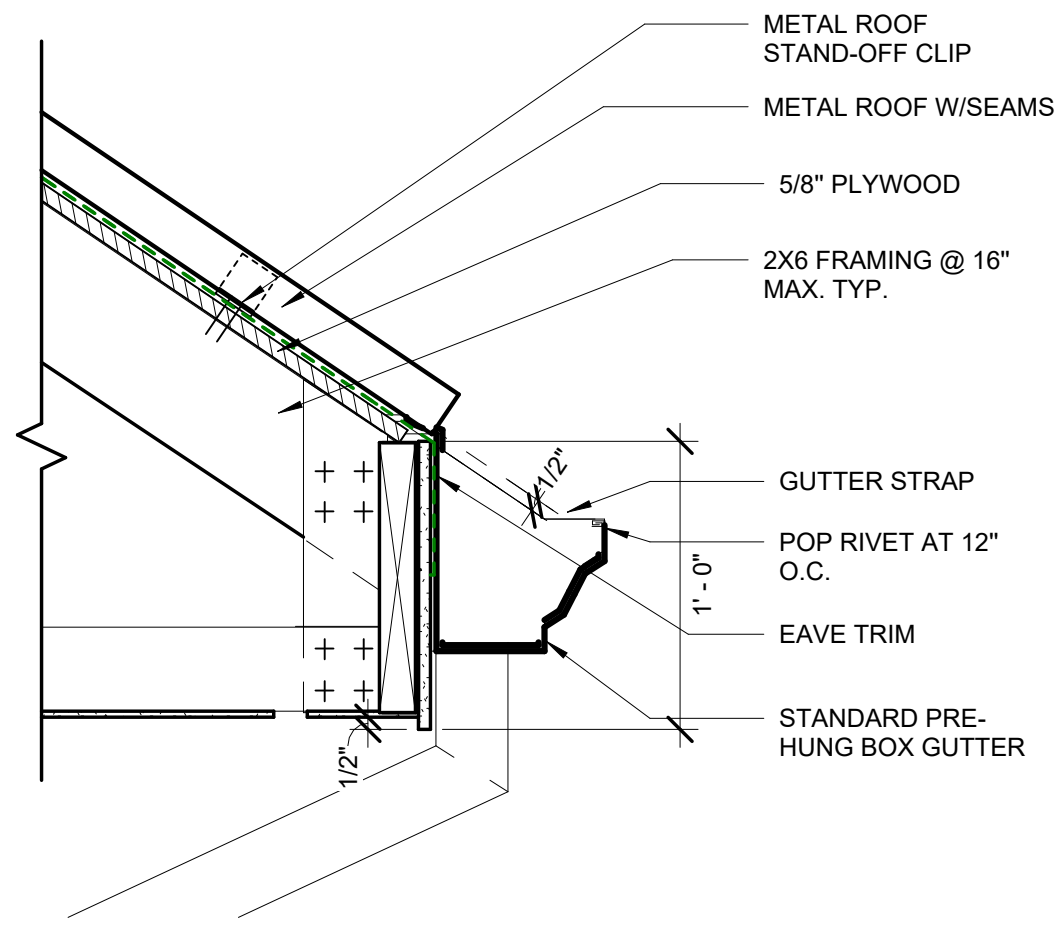
ISSUE: CONSTRUCTION DOCUMENTS	
DATE:	08/29/2025
PROJECT NO:	22067
DRAWN BY:	SHZ
CHECKED BY:	DLD

WALL SECTION

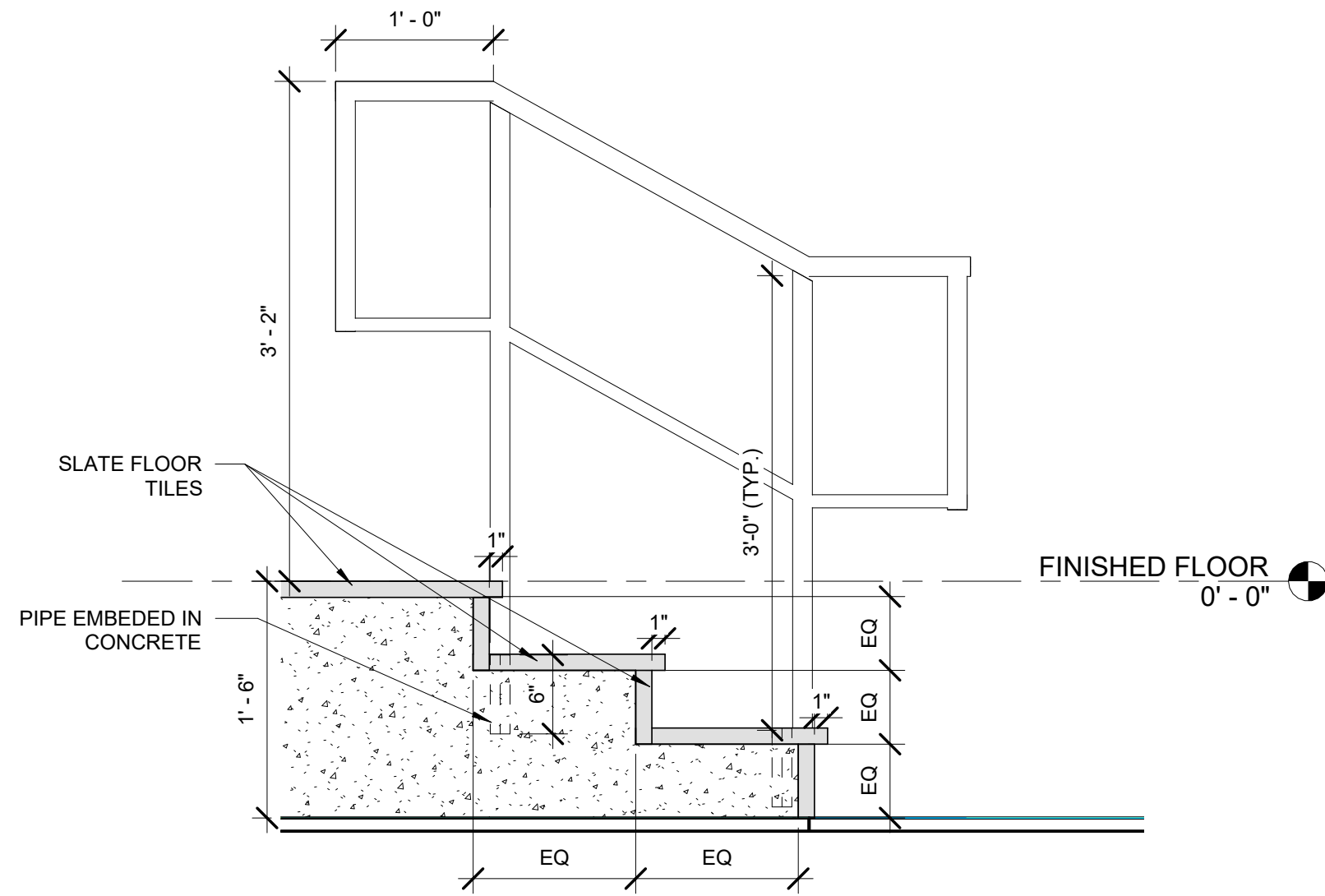
A502



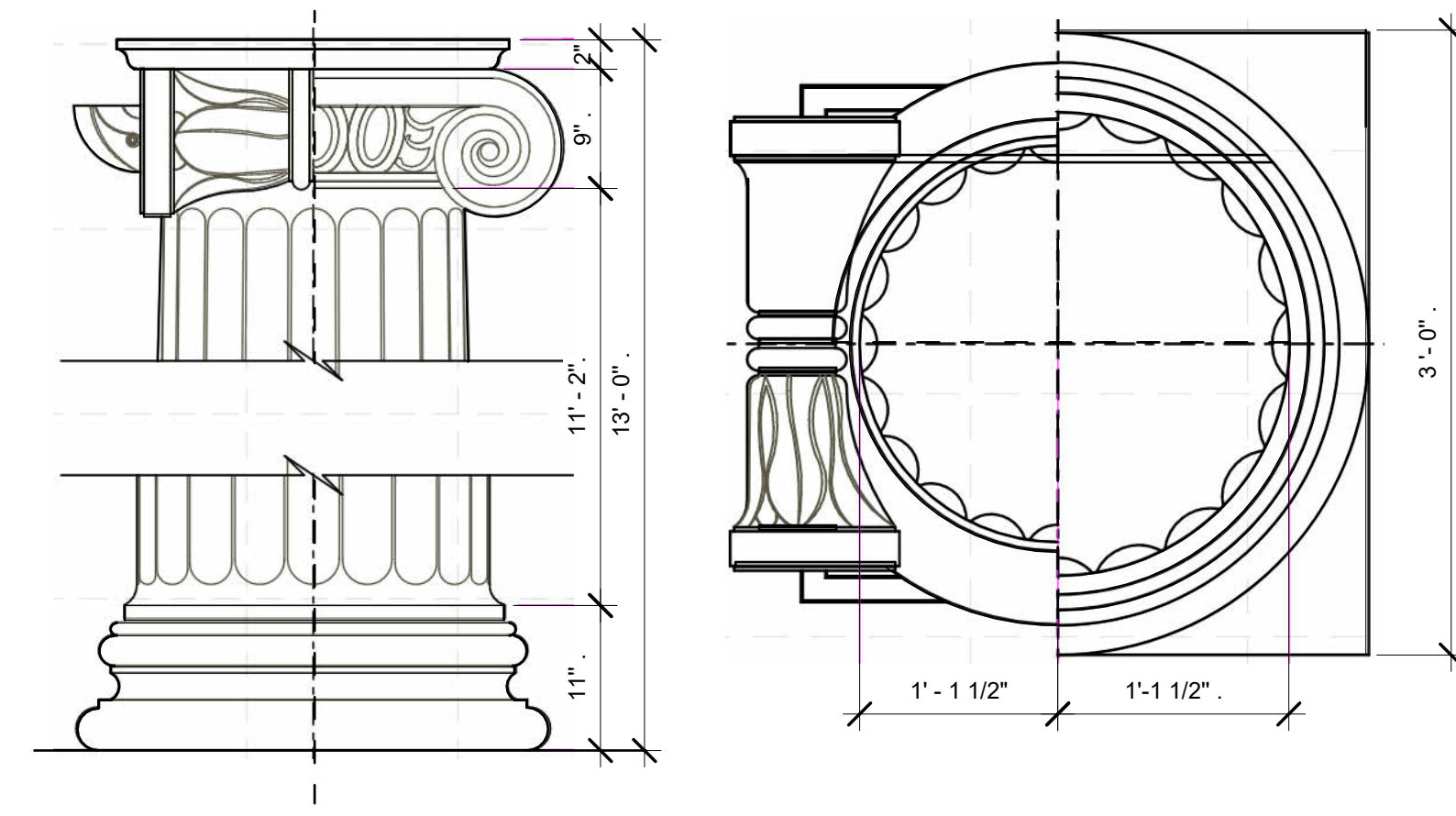




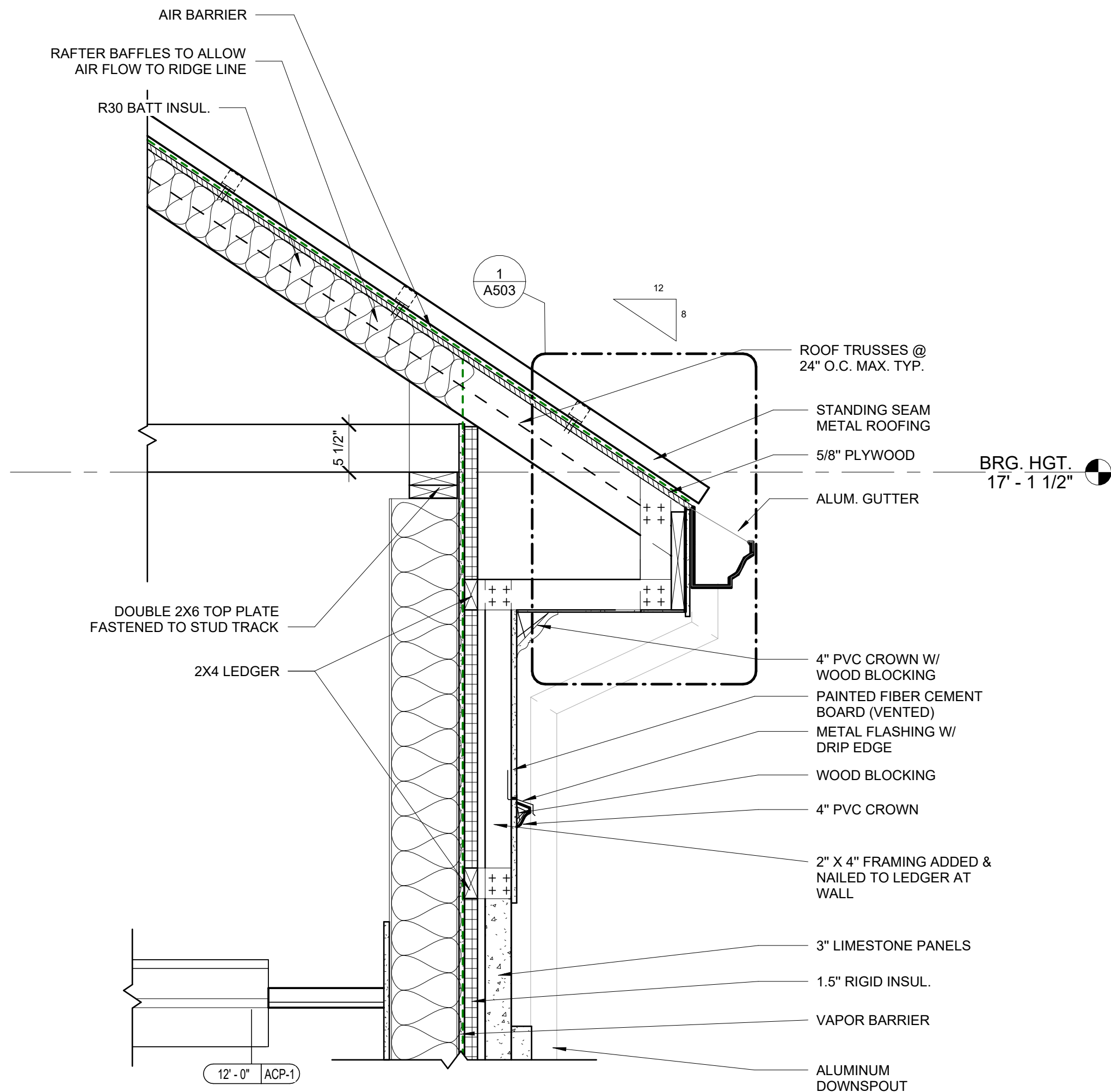
1 ROOF GUTTER  
A503 1 1/2" = 1'-0"



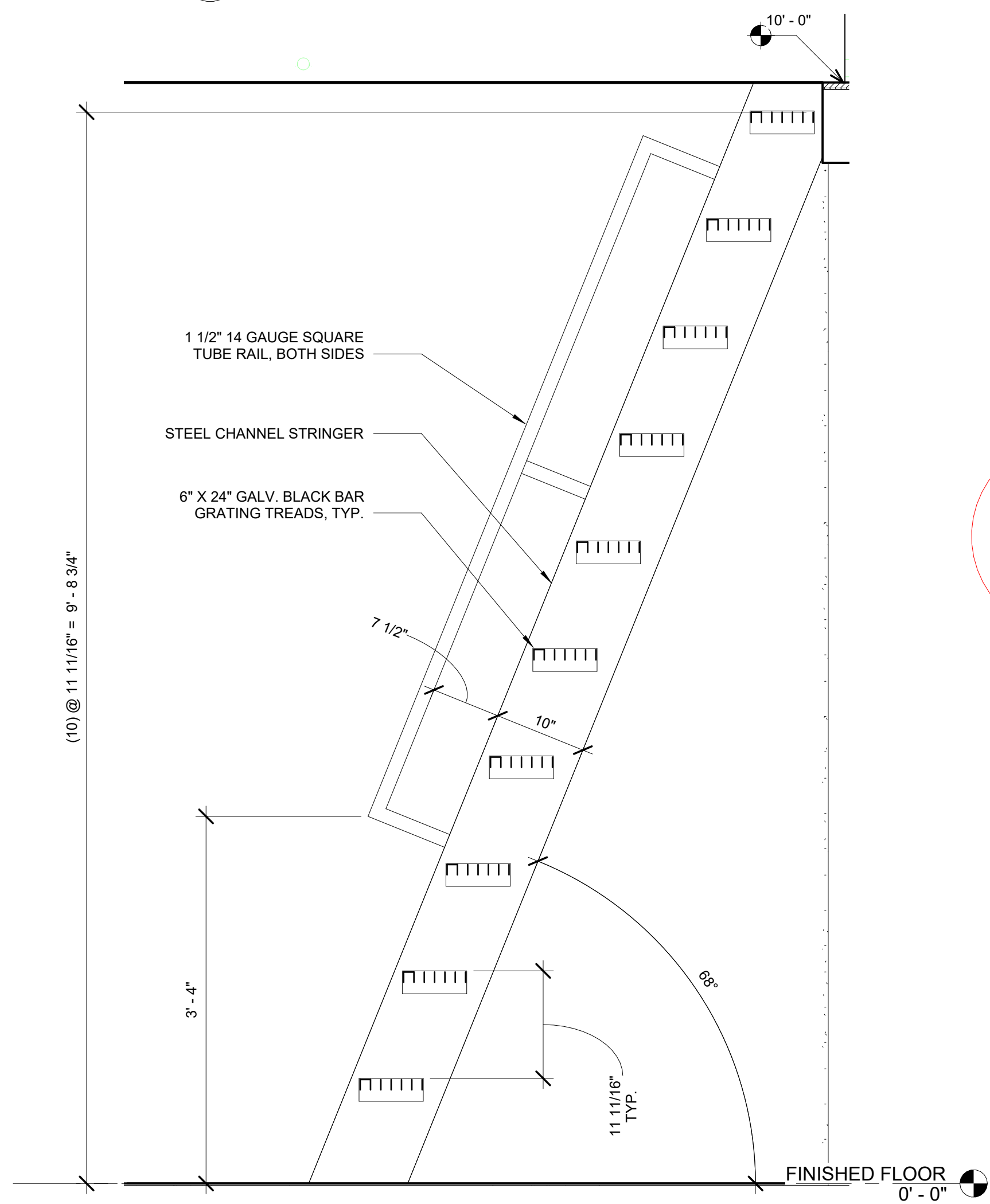
2 HANDRAIL AT FRONT STEPS  
A503 1" = 1'-0"



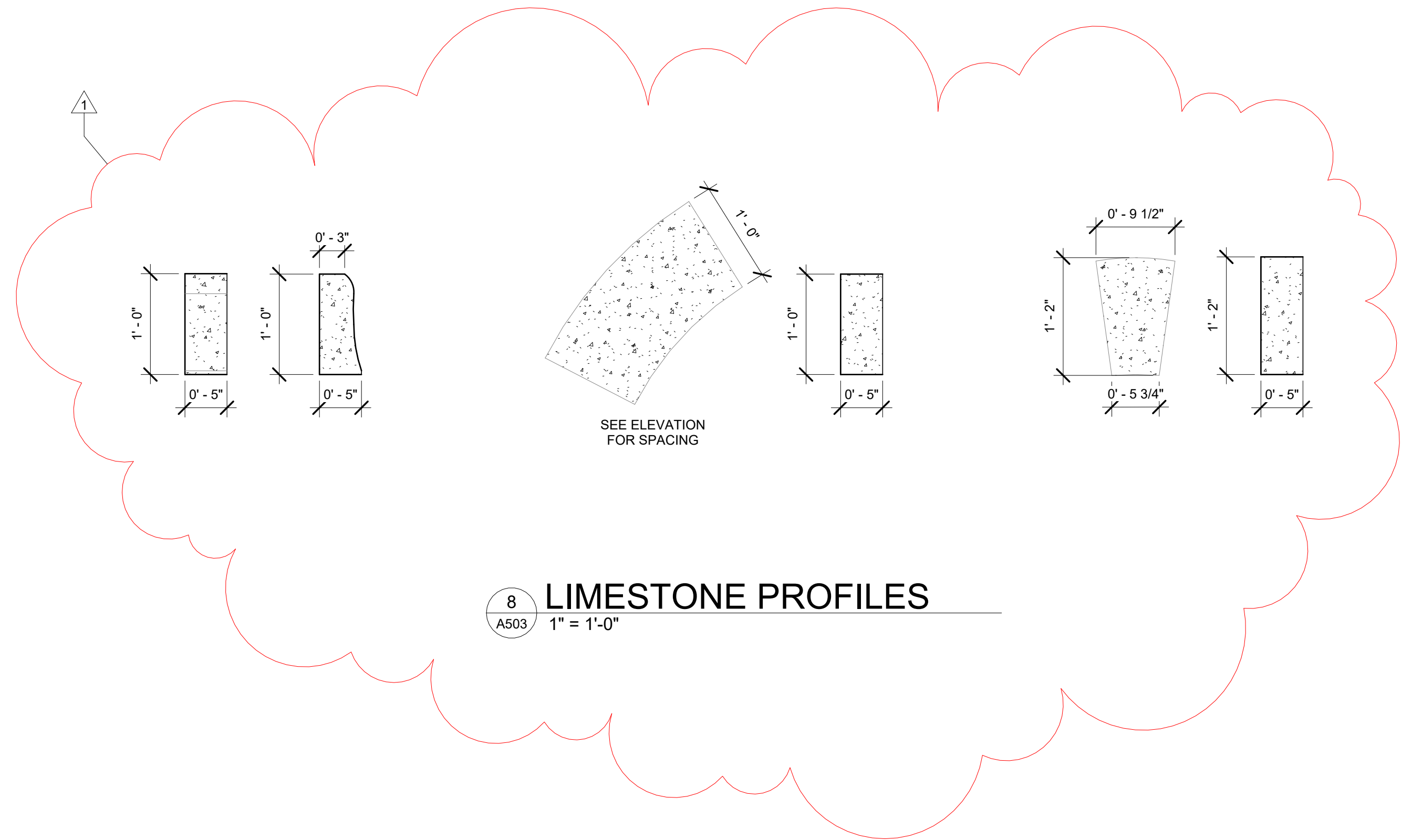
3 IONIC COLUMN DETAIL  
A503 1" = 1'-0"



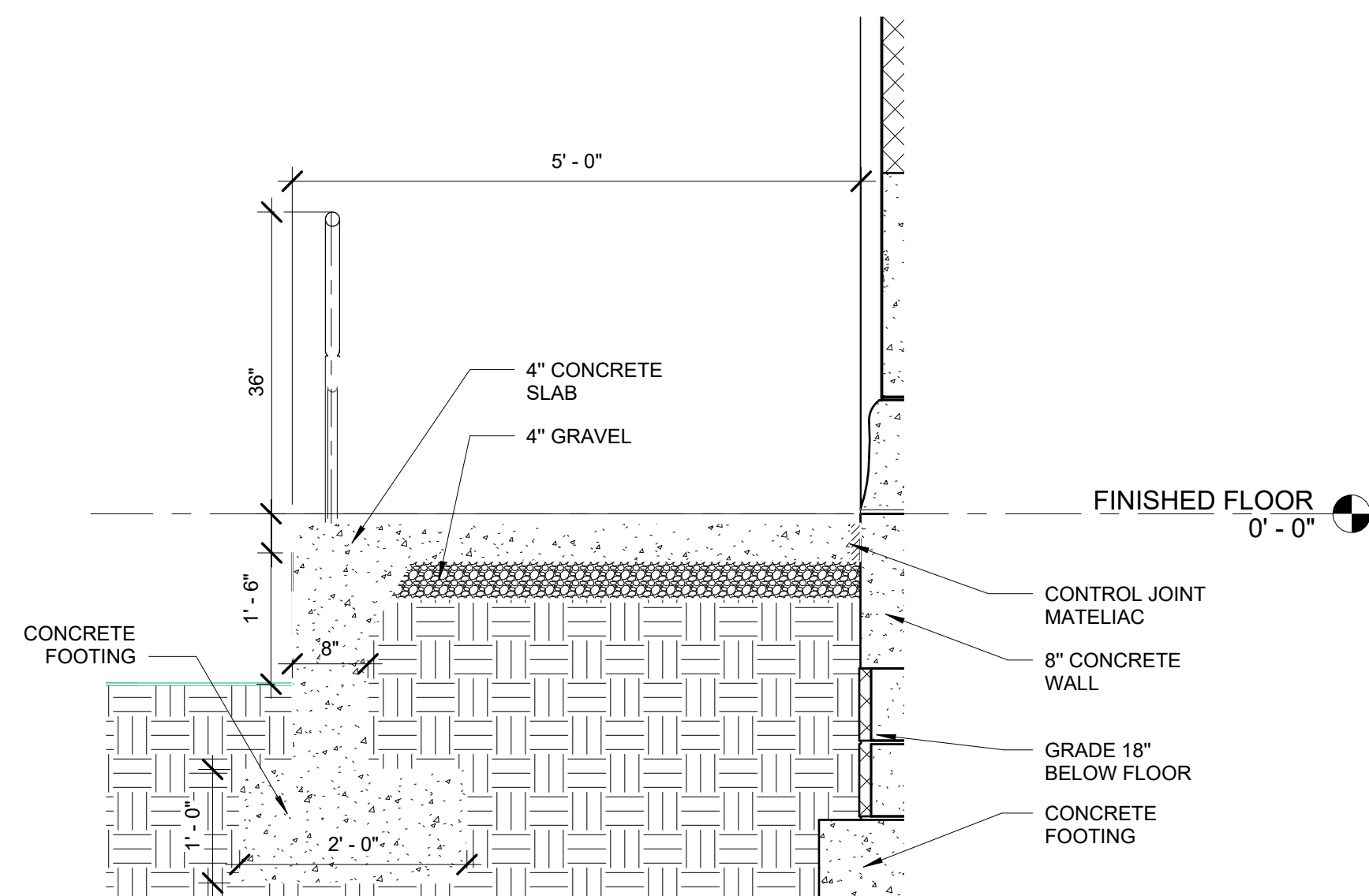
4 DETAIL SECTION - ROOF 1  
A503 1" = 1'-0"



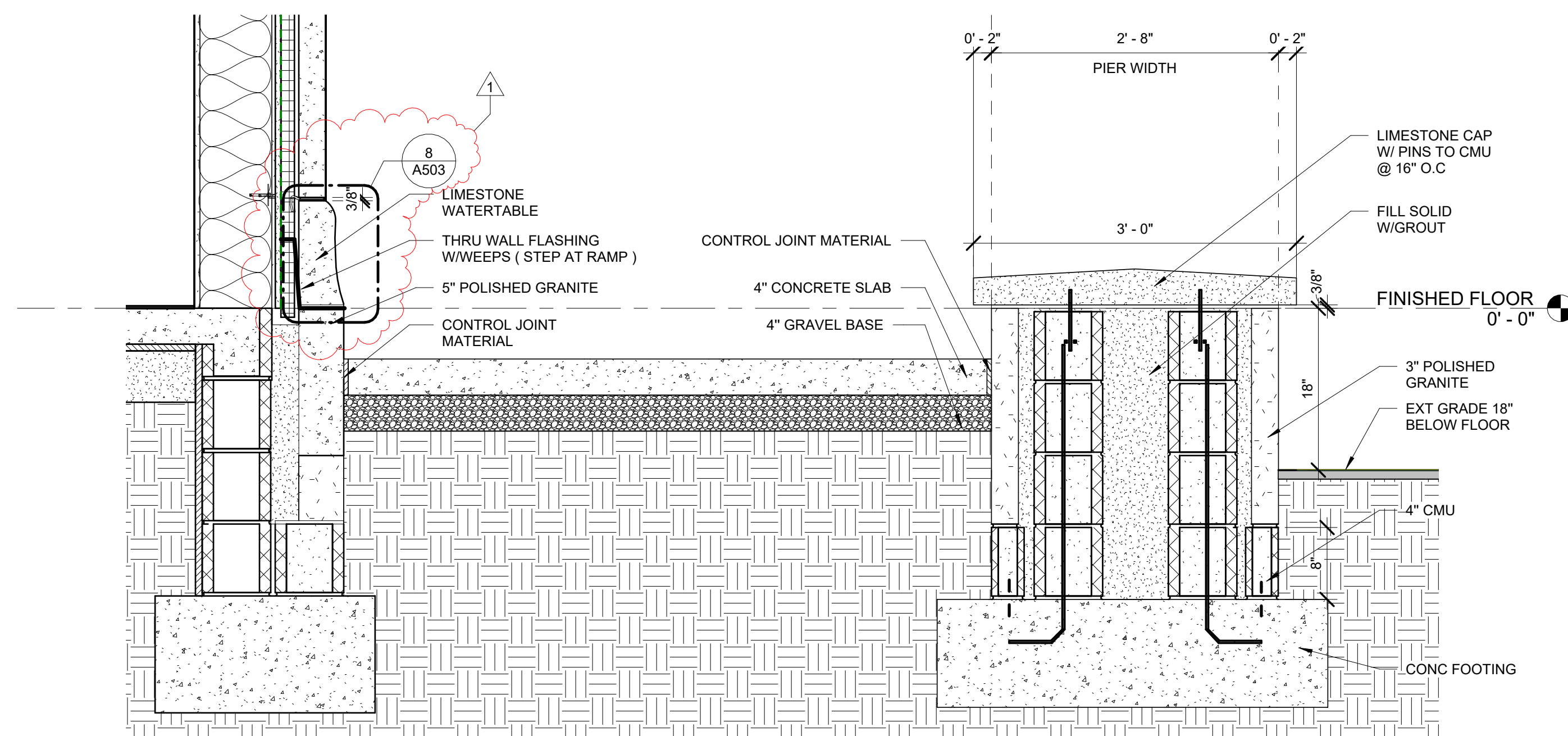
5 UTILITY STAIR  
A503 1" = 1'-0"



8 LIMESTONE PROFILES  
A503 1" = 1'-0"



6 Section - RAMP  
A503 3/4" = 1'-0"



7 WALL SECTION - RAMP  
A503 1" = 1'-0"

CRAIG  
GAULDEN  
DAVIS **PRK**

19 Washington Park  
Greenville, SC 29601  
Phone 864-242-0761  
Fax 864-501-9945  
E-mail cgd@cgaarch.com

COPYRIGHT © 2022 CRAIG GAULDEN & DAVIS, INC.  
ALL RIGHTS RESERVED

THIS COPYRIGHTED DOCUMENT AND ALL  
INFORMATION CONTAINED HEREIN IS AN  
INSTRUMENT OF SERVICE AND SHALL NOT BE  
REPRODUCED, ALTERED, OR REUSED IN PART  
OR IN WHOLE WITHOUT PRIOR WRITTEN  
PERMISSION FROM THE ARCHITECT. THIS  
DRAWING IS THE EXCLUSIVE PROPERTY OF  
THE ARCHITECT AND MUST BE RETURNED  
UPON REQUEST.



CONSULTANT

HARVIN  
CLARENDON  
COUNTY  
LIBRARY

TURBEVILLE  
BRANCH LIBRARY

1178 Smith Street  
Turbeville, S.C. 29162

DATE	MARK	DESCRIPTION
08/17/2025	1	GENERAL REVISIONS


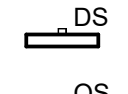


ISSUE: CONSTRUCTION DOCUMENTS  
DATE: 08/29/2025  
PROJECT NO: 22067  
DRAWN BY: SHZ  
CHECKED BY: DLD

DETAIL SECTION

A503

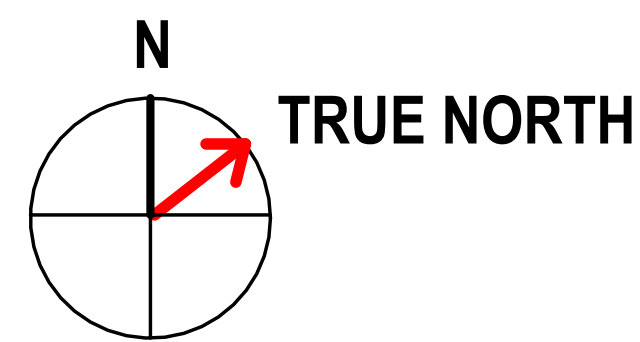
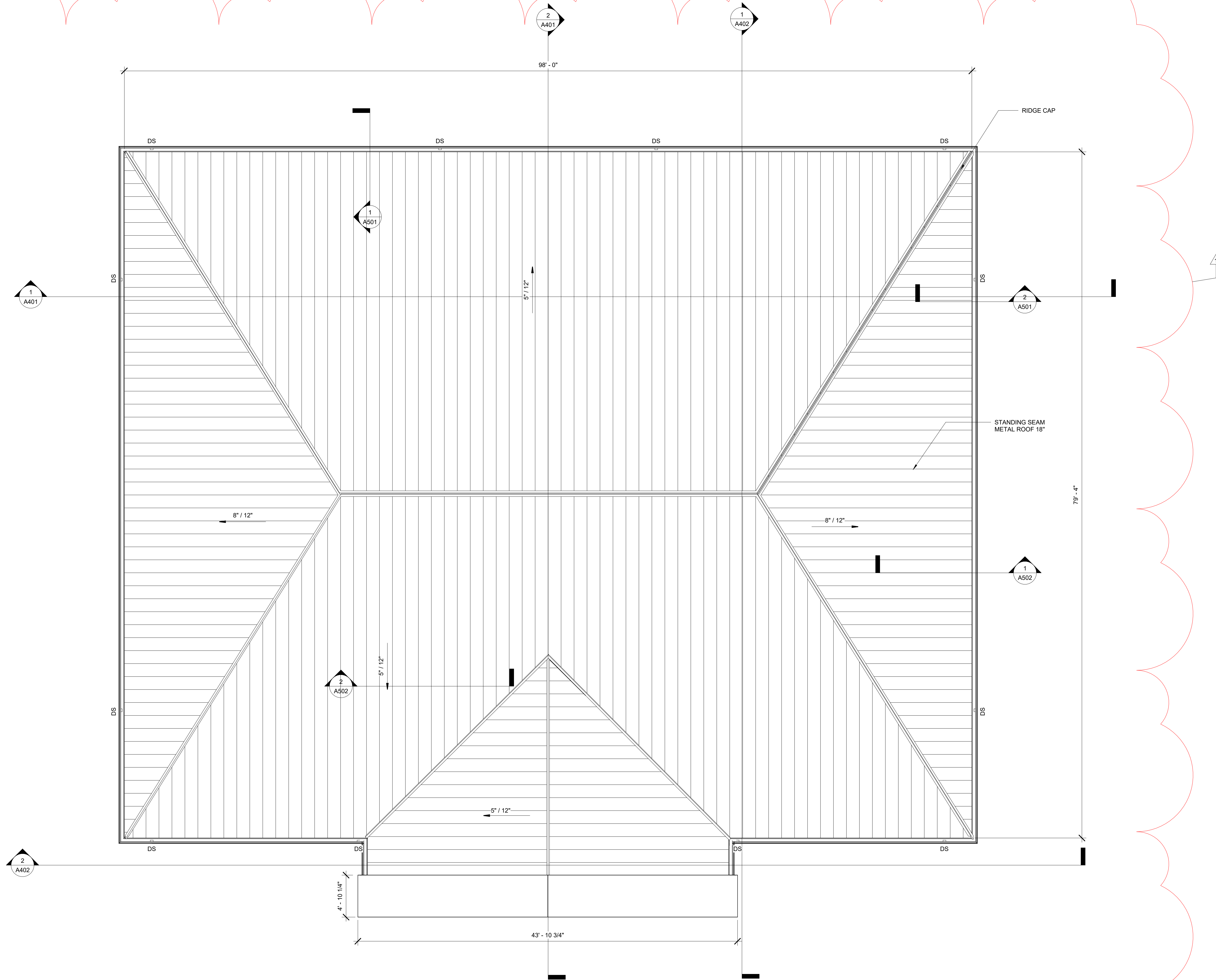


ROOF PLAN LEGEND

	ROOF DRAIN AND DRAIN SUMP
	DOWN SPOUT
	OVERFLOW SCUPPER
	ROOF SLOPE

GENERAL ROOF NOTES

1. Unless otherwise noted, all roof slopes shall be 1/4" rise per foot.
2. Typical roofing shall be a \_\_\_\_ roofing system. See roof details for additional information.
3. Provide all tapered insulation, crickets, curbs, and accessories required for positive roof drainage.
4. Roof slopes shown indicate the final roof slope, roof structure slopes where indicated on structural drawings to reduce quantity of tapered insulation.
5. Provide splash box for roof top equipment condensate drains.
6. Contractor shall coordinate with mechanical and roofing contractor on the required height of all roof top equipment curbs and the height of the roofing insulation prior to installation of any work.



B5 ROOF PLAN  
A601 3/16" = 1'-0"



#### GENERAL CEILING NOTES

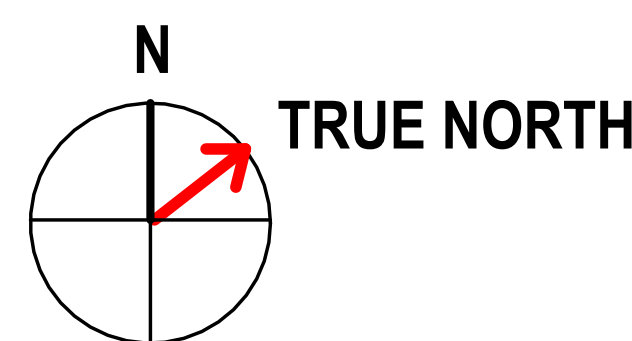
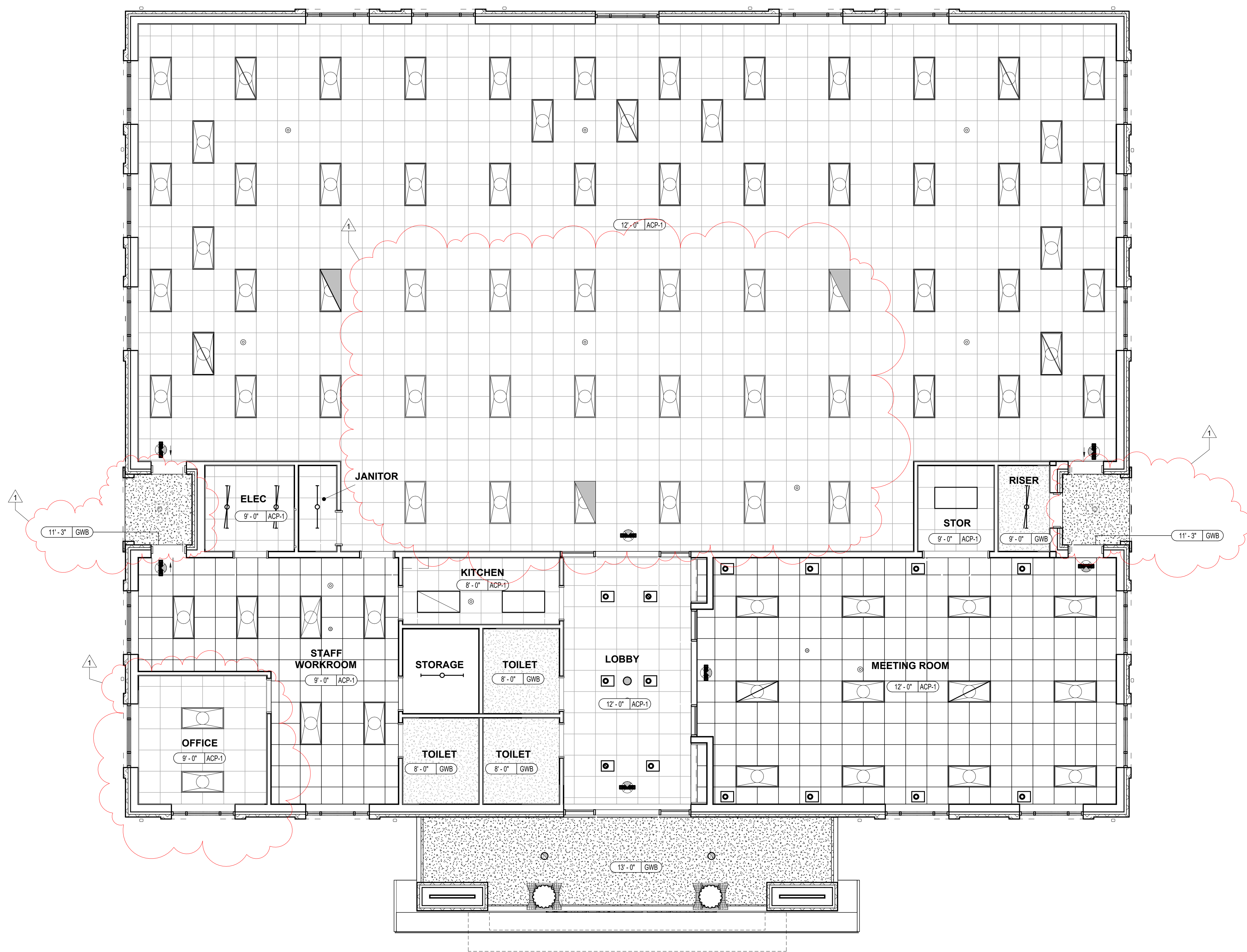
- See finish schedule for ceiling material specifications.
- Unless noted otherwise, suspended grid ceilings shall be centered in all spaces.
- Unless noted otherwise, all ceiling heights shall be installed 9'-0" above the finished floor elevation.
- Provide access panels where required for access to equipment or devices located above continuous hard ceilings. The Contractor shall coordinate the reflected ceiling plans with engineering drawings for access door locations. Where ceiling access doors are required in public areas such as lobbies, public restrooms and conference rooms, access doors shall be through a removable grille in lieu of an operable access door. All access doors shall be indicated on coordination drawings and coordinated in the field with the Architect / Engineer.
- See engineering drawings for mechanical and electrical devices that are within the scope of the project but which are not depicted on these drawings.
- Unless noted otherwise, all devices including, but not limited to, lights, speakers, mechanical grilles, and switches shall be centered within the ceiling tile where indicated.
- Contractor shall provide all necessary framing and cross bracing for gypsum ceilings and vertical walls that define a break in a ceiling plane.
- All suspended ceiling work shall meet the requirements of all applicable codes and standards. Determination and evaluation of applicable code requirements, the engineering design of the system, and the installation of mechanical and electrical equipment within the suspended ceiling assembly shall be the responsibility of the Contractor or specialty Subcontractors. If required by code, an engineer licensed in the state in which the project is located shall design the system and submit design documents and calculations to the Architect for review.
- The Contractor shall coordinate all utility piping, ductwork, conduit, equipment, devices, fixtures and grilles with the architectural reflected ceiling plans and building sections. System components indicated on the drawings are approximate in nature and must be coordinated between all Subcontractors during the submittal phase and prior to installation of equipment. The Contractor shall prepare coordination drawings for review and approval prior to the installation of any systems components or suspended ceilings.

#### REFLECTED CEILING PLAN LEGEND

	ACP-1: 2x2' SUSPENDED ACoustical PANEL CEILING SYSTEM
	GWB: SUSPENDED GYPSUM BOARD CEILING
	PROJECTION SCREEN
	2 x 4 LIGHT FIXTURE
	2 x 2 LIGHT FIXTURE
	1 x 4 LIGHT FIXTURE
	LINEAR PENDANT LIGHT FIXTURE
	STRIP LIGHT FIXTURE
	TRACK LIGHT FIXTURE(S)
	PENDANT LIGHT FIXTURE
	DOWN LIGHT
	SUPPLY AIR DIFFUSER
	RETURN AIR DIFFUSER
	CEILING ACCESS PANEL
	OVERHEAD PROJECTOR (NIC)
	CEILING ELEVATION ABOVE FINISHED FLOOR / MATERIAL

#### KEY NOTE LEGEND

- 01 SLOPED CEILING
- 02 FOLDING PANEL PARTITION
- 03 LINE OF SOFFIT ABOVE



B6 LEVEL 1 REFLECTED CEILING PLAN  
A801 3/16" = 1'-0"