

ADDENDUM No. 3

Project Name: **CLARENDON COUNTY EMERGENCY MANAGEMENT &
911 COMMUNICATIONS DISPATCH CENTER**

Date: June 06, 2025

From: Caplea Coe Architects, Inc.
1643 Means Street
Charleston, SC 29412
843.577.6073

To: **All Plan Holders**

This Addendum forms a part of the Contract Documents and modifies the original Bidding Documents (Drawings and Project Manual dated May 01, 2025), Addendum #01 (dated May 21, 2025), and Addendum #2 (dated June 02, 2025). Only the information contained in this Addendum shall be considered as a part of the Bid Documents. This Addendum consists of 4 pages and 13 pages of attachments for a total of **17 pages**.

I. PROJECT MANUAL

1. Table of Contents: add the following and insert attached specifications in the appropriate location of the manual:
 - i. "071326 – Self Adhering Sheet Membrane Waterproofing...6 pages"
 - ii. "072500 – Weather Barriers....1 page"
2. Reference Specification Section 012100 - Allowances: change item 3.3.C Allowance No. 3 to read,
"Allowance No. 3: Quantity Allowance: Include 1000 cu. yd. of unsatisfactory soil remediation. See Geotechnical Report and Unit Prices Specification."
3. Reference Specification Section 012200 – Unit Prices: change item 3.1.A.1 to read,
"Description: Unsatisfactory remediation as required. See Geotechnical Report".
4. Reference Specification Section 084113 – Aluminum Framed Entrances and Storefronts: delete this specification section in its entirety. All interior windows are to be Hollow Metal.

II. DRAWINGS

1. Reference Sheet A623:
 - i. Wall type W5: Change "keynote 072726.A (Fluid Applied Membrane Air Barrier)" shown on the outside face of sheathing to "072500.A Building Paper".
 - ii. Roof type R2: Remove reference to "keynote 072726.A" at concrete.
 - iii. Floor type F3: Remove reference to "keynote 093000.E" and replace with, "See Finish Plan".
2. Reference Sheet A313: See sketch SK-02 for additional details for louver sill and roof edge, See Attachment "H"
3. Reference Sheet A602:
 - i. Change reference to "Storefront" on SF8 and SF9 to "Hollow Metal"
 - ii. Drawing Quadrant D1, change "Basis of Design Interior" from "YKK YES 40 FI" to "Hollow Metal". Maintain fire ratings as per original Contract Documents.
4. Reference Sheet A623: Add Wall Type 10, See sketch SK-01, Attachment "G".

III. BIDDERS QUESTIONS:

Q. Can you please confirm if a local vendor preference will be applicable to this bid and what the details are?

A. Yes, the County currently has a local preference (per County Ordinance 2023-08) for vendors with a physical presence in Clarendon County.

Q. I wanted to submit a question regarding something mentioned at the pre-bid meeting today. The Architect mentioned that this was not a 'Mandatory' pre-bid meeting. However, specification section 002513 - PREBID MEETINGS, Section B. 3. states "Notice: Bids will only be accepted from prime bidders represented on the Prebid Meeting sign-in sheet." Can you please clarify?

A. The pre-bid meeting (May 15th, 2025) was not mandatory – it was “recommended”. The intent of the statement was to indicate that the County would accept bids from GC’s only – not subcontractors.

Q. The SWPPP Sequence delineated on the plans require the construction of the pond area to occur as soon as possible, which should include the excavation of the pond, and the installation of the pond outlet structure and all pond BMPs. It specifically requires this to be done prior to the installation of the building pad. The top of slope of the pond is very close to the building on the North and West sides of the building. If the pond is constructed first it will make access around the building extremely difficult (if not impossible), especially with erected scaffolding during the installation of the facebrick veneer, metal siding, windows, canopies, etc. Can the SWPPP sequence be adjusted to allow the pond construction to be done after the building is up and the exterior siding, windows, canopies, etc. are complete? If not, is there a way to limit the initial construction of the pond to a smaller area, and then complete the pond once it will no longer interfere with the construction of the building? Please advise.

A. Per the approved SWPPP sequence, the stormwater pond and its associated BMPs (including the outlet structure and outfall) must be constructed and functional prior to beginning building pad work. This sequencing is not discretionary - it's a regulatory requirement set by SCDES and tied directly to permit compliance.

The grading design includes a minimum 10-ft shelf around the building footprint (larger in many areas). Means and Methods for scaffolding and exterior construction activities like veneer, canopies and window installation are the Contractor's responsibility.

If there are still logistical concerns, the contractor may proceed with partial excavation of the pond in these constrained areas, provided that:

- ***The pond remains functional as a BMP***
- ***The majority of excavation is completed***
- ***The outlet structure, outfall and erosion control measures are fully installed***
- ***Temporary grading still allows for proper stormwater conveyance to the basin***

This approach has been accepted on past projects, but it must still meet the intent of the SWPPP and receive field verification during construction.

Q: Allowance No. 3 states, “Quantity Allowance: Include 1,000 cy of unsatisfactory soil remediation, as specified in Section 312000, “Earth Moving”. See Unit Prices Specification. The 3:1 Schedule of Unit Prices Section A. 1. states, unsatisfactory remediation as required, according to Section 312000 “Earth Moving”. Section A. 2. Unit of Measurement: Cubic Yard (Cubic Meter) of soil excavated, based on in place surveys of volume before and after removal. Normally, the excavated unsuitable soils

vary from the newly compacted structural fill because of the density of the excavated soils and the shrinkage of the newly compacted structural fill due to compaction.

1. Does remediation mean mucking, hauling off and compacting new structural fill?
Please clarify.
A: YES
2. There is no listing in the specifications for Section 312000 "Earth Moving".
A. Change references in Allowance No. 3 from "Section 312000 Earth Moving" to "see Geotechnical Report".
3. Please provide a header detail for SF5 Storefront Windows?
A. See detail F1 Sheet A311 Attachment "D"
4. Sheet A320 detail D6 shows a drainable weather barrier (074600.O) with a self-adhering sheet underlayment (074113.H) sticking to the drainable weather barrier? Is this possible? It seems like the self-adhering sheet underlayment should stick to the CMU and have a protection board placed against it, in lieu of the drainable weather barrier.
A. See revised Sheet A320 Attachment "F"
5. W5 wall detail on sheet A310 detail F4 shows an extra row of CMU on the footing up to the floor slab elevation for the exterior metal stud framing to attach. Sheet S302 detail 4 shows brick and no CMU masonry under the metal framing. Please advise which is correct.
A. See revised Sheet A320 Attachment "F"
6. If the CMU is installed on the W5 walls as shown on Sheet A320 detail D6, then the self-adhering sheet underlayment (074113.H) will be exposed approximately 2" above the concrete pad shown. How is this going to look as a finished product? Where is this concrete pad shown for this particular application? Please advise.
A. Cement based waterproofing has been added to cover the exposed face of concrete substrate. See revised Sheet A320 Attachment "F"
A. See sheet A102 and Civil drawings for exterior concrete walks/pads

Q: Sheet T-002 Responsibility Matrix – For OO (Owner or other vendor) can this be done under GC? For example, Under AV Systems: Procurement is GC, but programming is OO. Can GC/Sub provide both? Is "OO" going to be a bidding process? (Who would provide the programming?)

A: System programming is by the low voltage system installer not by Owner.

Q: Sheet T-104: Note 2: Wireless Access Points – will owner provide Ubiquiti management device, or does bid need to include Ubiquiti cloud key or equivalent?

A: Provide wireless management device

Q: Sheet T-501: Access Control – Manufacturer and specs for devices are not included. Does the owner need a specific mfg. and sku for this to tie into an existing system?

A: Specification 281000 calls for Avigilon as the basis of design. The Avigilon requirement is per the request of the County and Motorola offerings.

Q: Structured Cabling: Is there a specific manufacturer the owner would like to use for cables, jacks, etc..... Or is cost the main driver?

A: For the structured cabling system, the bidder needs to review specification section 271000. The cabling spec is open to multiple manufacturers as indicated in Part 2 of the specification.

Q. Will exterior doors and windows be Level 3 ballistic or Hurricane Impact? EFCO will not quote because their 526 storefront is not ballistic rated, it is only Hurricane Impact rated. Please clarify the requirements for all exterior storefront windows and entrances.

A. All exterior storefront systems are Level 3 ballistic per the Contract Documents.

Q. Finish warranty will not be able to furnish 20 year on anodized finish. The door schedule has both anodized and painted finish. You can get a 20 year on painted only. Please clarify the desired finish and warranty requirements.

A. Provide manufacturer's standard warranty

Q. On page A511 your exterior window mock-up elevation references spec section 84113 which is the EFCO Hurricane Impact 526 storefront which doesn't match the Level 3 ballistic. Is this correct for the mock-up, or should it be Level 3 Ballistic as well?

A. A511 does not show a reference to 084113, however, all interior windows have been changed to hollow metal frames.

A. Windows in the mockup panel shall be as per the Contract Documents.

IV. ATTACHMENTS:

- A. Specification 071326 – Self Adhering Sheet Membrane Waterproofing, 6 pages, 8.5x 11
- B. Specification 072500 – Weather Barriers, 1 page, 8.5 x 11
- C. Sheet A310, 1 page, 30 x 42
- D. Sheet A311, 1 page, 30 x 42
- E. Sheet A312, 1 page, 30 x 42
- F. Sheet A320, 1 page, 30 x 42
- G. Sheet A321, 1 page, 30 x 42
- H. Detail SK 01, 1 page 8.5 x. 11
- I. Detail SK-02, 1 page 8.5 x. 11

END OF ADDENDUM

EMERGENCY MANAGEMENT AND 911 COMMUNICATIONS DISPATCH CENTER

SECTION 071326 - SELF-ADHERING SHEET MEMBRANE WATERPROOFING

PART 1 - GENERAL

1.1 SUMMARY

A. Section Includes:

1. Sheet waterproofing.
2. Molded-sheet drainage panels.

B. Related Requirements:

1. Section 072100 "Building Insulation" for extruded polystyrene insulation.

1.2 PREINSTALLATION MEETINGS

A. Preinstallation Conference: Conduct conference at Project site.

1. Review waterproofing requirements including surface preparation, substrate condition and pretreatment, minimum curing period, forecasted weather conditions, special details and sheet flashings, installation procedures, inspection procedures, and protection and repairs.

1.3 ACTION SUBMITTALS

A. Product Data: For each type of product.

1. Include construction details, material descriptions, and tested physical and performance properties of waterproofing.
2. Include manufacturer's written instructions for evaluating, preparing, and treating substrate.

B. Shop Drawings: Show locations and extent of waterproofing and details of substrate joints and cracks, expansion joints, sheet flashings, penetrations, inside and outside corners, tie-ins with adjoining waterproofing, and other termination conditions.

C. Samples: For each exposed product and for each color and texture specified, including the following products:

1. 8-by-8-inch square of waterproofing and flashing sheet.
2. 4-by-4-inch square of drainage panel.

1.4 INFORMATIONAL SUBMITTALS

A. Qualification Data: For Installer.

B. Field quality-control reports.

EMERGENCY MANAGEMENT AND 911 COMMUNICATIONS DISPATCH CENTER

- C. Sample Warranties: For special warranties.

1.5 QUALITY ASSURANCE

- A. Installer Qualifications: An entity that employs installers and supervisors who are trained and approved by waterproofing manufacturer.

1.6 FIELD CONDITIONS

- A. Environmental Limitations: Apply waterproofing within the range of ambient and substrate temperatures recommended in writing by waterproofing manufacturer. Do not apply waterproofing to a damp or wet substrate.
 - 1. Do not apply waterproofing in snow, rain, fog, or mist.
- B. Maintain adequate ventilation during preparation and application of waterproofing materials.

1.7 WARRANTY

- A. Manufacturer's Warranty:
 - 1. Waterproofing Warranty: Manufacturer agrees to furnish replacement waterproofing material for waterproofing that does not comply with requirements or that fails to remain watertight within specified warranty period.
 - a. Warranty Period: Five years from date of Substantial Completion.
- B. Installer's Special Warranty: Specified form, signed by Installer, covering Work of this Section, for warranty period of two years.

PART 2 - PRODUCTS

2.1 SOURCE LIMITATIONS

- A. Source Limitations for Waterproofing System: Obtain waterproofing materials and molded-sheet drainage panels from single source from single manufacturer.

2.2 SHEET WATERPROOFING

- A. Modified Bituminous Sheet Waterproofing: Minimum 60-mil nominal thickness, self-adhering sheet consisting of 56 mils of rubberized asphalt laminated on one side to a 4-mil- thick, polyethylene-film reinforcement, and with release liner on adhesive side.
 - 1. Basis-of-Design Product: Subject to compliance with requirements, Carlisle Coatings & Waterproofing Inc. CCW MiraDRI 860/861 or comparable product by one of the following:
 - a. GCP Applied Technologies Inc.; Bituthene System 3000.
 - b. Henry Company; a Carlisle company; Blueskin WP200.
 - c. Polyguard Products, Inc.; 650 Membrane or 650 Membrane Winter.

EMERGENCY MANAGEMENT AND 911 COMMUNICATIONS DISPATCH CENTER

- d. W. R. Meadows, Inc.; Mel-Rol.
- 2. Physical Properties:
 - a. Tensile Strength, Membrane: 325 psi minimum; ASTM D412, Die C, modified.
 - b. Ultimate Elongation: 350 percent minimum; ASTM D412, Die C, modified.
 - c. Low-Temperature Flexibility: Pass at minus 20 degrees F; ASTM D1970/D1970M.
 - d. Crack Cycling: Unaffected after 100 cycles of 1/8-inch movement; ASTM C836/C836M.
 - e. Puncture Resistance: 60 lbf minimum; ASTM E154/E154M.
 - f. Water Absorption: 0.1 percent weight-gain maximum after 48-hour immersion at 70 degrees F; ASTM D570.
 - g. Water Vapor Permeance: 0.05 perm maximum; ASTM E96/E96M, Water Method.
 - h. Hydrostatic-Head Resistance: 230 feet minimum; ASTM D5385.

2.3 ACCESSORIES

- A. Furnish accessory materials recommended by waterproofing manufacturer for intended use and compatible with sheet waterproofing.
 - 1. Furnish liquid-type accessory materials that comply with VOC limits of authorities having jurisdiction.
- B. Primer: Liquid primer recommended for substrate by sheet waterproofing material manufacturer.
- C. Surface Conditioner: Liquid, waterborne surface conditioner recommended for substrate by sheet waterproofing material manufacturer.
- D. Liquid Membrane: Elastomeric, two-component liquid, cold fluid applied, of trowel grade or low viscosity.
- E. Substrate Patching Membrane: Low-viscosity, two-component, modified asphalt coating.
- F. Metal Termination Bars: Aluminum bars, approximately 1 by 1/8 inch, predrilled at 9-inch centers.
- G. Insulation: See Section 072100 "Building Insulation" for extruded polystyrene insulation.
 - 1. Thickness: 2 inches.

2.4 MOLDED-SHEET DRAINAGE PANELS

- A. Nonwoven-Geotextile-Faced, Molded-Sheet Drainage Panel with Polymeric Film: Composite subsurface drainage panel acceptable to waterproofing manufacturer and consisting of a studded, nonbiodegradable, molded-plastic-sheet drainage core; with a nonwoven, needle-punched geotextile facing with an apparent opening size not exceeding No. 70 sieve laminated to one side of the core and a polymeric film bonded to the other side; and with a vertical flow rate through the core of 9 to 21 gpm per ft.
 - 1. Basis-of-Design Product: Subject to compliance with requirements, Carlisle

EMERGENCY MANAGEMENT AND 911 COMMUNICATIONS DISPATCH CENTER

Coatings & Waterproofing Inc. CCW MiraDRAIN 6200 or comparable product by one of the following:

- a. GCP Applied Technologies Inc.
- b. Henry Company; a Carlisle company.
- c. Polyguard Products, Inc.
- d. W. R. Meadows, Inc.

PART 3 - EXECUTION

3.1 EXAMINATION

- A. Examine substrates, areas, and conditions, with Installer present, for compliance with requirements and other conditions affecting performance of waterproofing.
 1. Verify that concrete has cured and aged for minimum time period recommended in writing by waterproofing manufacturer.
 2. Verify that substrate is visibly dry and within the moisture limits recommended in writing by manufacturer. Test for capillary moisture by plastic sheet method in accordance with ASTM D4263.
 3. Verify that compacted subgrade is dry, smooth, sound, and ready to receive waterproofing sheet.
- B. Proceed with installation only after unsatisfactory conditions have been corrected.

3.2 PREPARATION

- A. Clean, prepare, and treat substrates according to manufacturer's written instructions. Provide clean, dust-free, and dry substrates for waterproofing application.
- B. Mask off adjoining surfaces not receiving waterproofing to prevent spillage and overspray affecting other construction.
- C. Remove grease, oil, bitumen, form-release agents, paints, curing compounds, and other penetrating contaminants or film-forming coatings from concrete.
- D. Remove fins, ridges, mortar, and other projections.
- E. Fill form tie holes, honeycomb, aggregate pockets, holes, and other voids.
- F. Prepare, fill, prime, and treat joints and cracks in substrates. Remove dust and dirt from joints and cracks in accordance with ASTM D4258.
- G. Bridge and cover isolation joints, expansion joints, and discontinuous deck-to-wall and deck-to-deck joints with overlapping sheet strips of widths according to manufacturer's written instructions.
 1. Invert and loosely lay first sheet strip over center of joint. Firmly adhere second sheet strip to first and overlap to substrate.
- H. Corners: Prepare, prime, and treat inside and outside corners in accordance with manufacturer's instructions.

EMERGENCY MANAGEMENT AND 911 COMMUNICATIONS DISPATCH CENTER

1. Install membrane strips centered over vertical inside corners. Install 3/4-inch fillets of liquid membrane on horizontal inside corners and as follows:
 - a. At footing-to-wall intersections, extend liquid membrane in each direction from corner or install membrane strip centered over corner.
- I. Prepare, treat, and seal vertical and horizontal surfaces at terminations and penetrations through waterproofing and at drains and protrusions.

3.3 INSTALLATION OF SHEET WATERPROOFING

- A. Install modified bituminous sheets according to waterproofing manufacturer's written instructions.
- B. Apply primer to substrates at required rate and allow it to dry. Limit priming to areas that will be covered by sheet waterproofing in same day. Reprime areas exposed for more than 24 hours.
- C. Apply and firmly adhere sheets over area to receive waterproofing. Accurately align sheets and maintain uniform 2-1/2-inch- minimum lap widths and end laps. Overlap and seal seams, and stagger end laps to ensure watertight installation.
 1. When ambient and substrate temperatures range between 25 degrees and 40 degrees F, install self-adhering, modified bituminous sheets produced for low-temperature application. Do not use low-temperature sheets if ambient or substrate temperature is higher than 60 degrees F.
- D. Apply continuous sheets over already-installed sheet strips, bridging substrate cracks, construction, and contraction joints.
- E. Seal edges of sheet waterproofing terminations with mastic.
- F. Install sheet waterproofing and accessory materials to tie into adjacent waterproofing.
- G. Roll waterproofing membrane to firmly adhere to substrate. Roll seams and terminations.
- H. Repair tears, voids, and lapped seams in waterproofing not complying with requirements. Slit and flatten fishmouths and blisters. Patch with sheet waterproofing extending 6 inches beyond repaired areas in all directions.
- I. Immediately install protection course with butted joints over waterproofing membrane.
 1. Molded-sheet drainage panels may be used in place of a separate protection course to vertical applications when approved by waterproofing manufacturer and installed immediately.

3.4 INSTALLATION OF MOLDED-SHEET DRAINAGE PANELS

- A. Place and secure molded-sheet drainage panels, with geotextile facing away from wall substrate, according to manufacturer's written instructions. Use adhesive or another method that does not penetrate waterproofing. Lap edges and ends of geotextile to maintain continuity. Protect installed molded-sheet drainage panels during subsequent construction.

EMERGENCY MANAGEMENT AND 911 COMMUNICATIONS DISPATCH CENTER

1. For vertical applications, install board insulation before installing drainage panels.

END OF SECTION 071326

EMERGENCY MANAGEMENT AND 911 COMMUNICATIONS DISPATCH CENTER

SECTION 072500 - WEATHER BARRIERS

PART 1 - GENERAL

1.1 SUMMARY

A. Section Includes:

1. Building paper.

1.2 ACTION SUBMITTALS

A. Product Data:

1. Building paper.

PART 2 - PRODUCTS

2.1 WATER-RESISTIVE BARRIER

A. Building Paper:

1. ASTM D226/D226M, Type 1 (No. 15 asphalt-saturated organic felt), unperforated.

PART 3 - EXECUTION

3.1 INSTALLATION OF WATER-RESISTIVE BARRIER

- A. Cover exposed exterior surface of sheathing with water-resistive barrier securely fastened to framing immediately after sheathing is installed.
- B. Cover sheathing with water-resistive barrier as follows:
 1. Cut back barrier **1/2 inch (13 mm)** on each side of the break in supporting members at expansion- or control-joint locations.
 2. Apply barrier to cover vertical flashing with a minimum **4-inch (100-mm)** overlap unless otherwise indicated.
- C. Building Paper: Apply horizontally with a **2-inch (50-mm)** overlap and a **6-inch (150-mm)** end lap; fasten to sheathing with galvanized staples or roofing nails. Apply 2 layers in "shingle" fashion overlapping each course.

END OF SECTION 072500



THIS DRAWING HAS BEEN PREPARED BY CAPLEA COE ARCHITECTS, INC. FOR THIS PROJECT AND IS AN INSTRUMENT OF THE ARCHITECTS SERVICE FOR THE USE SOLELY WITH RESPECT TO THIS PROJECT. THE ARCHITECT SHALL BE DEEMED THE AUTHOR OF THIS DOCUMENT AND SHALL RETAIN ALL COMMON LAW, STATUTORY AND OTHER RESERVED RIGHTS, INCLUDING THE COPYRIGHT.

NOTES:

NOTE 1 CEMENT BASED WATERPROOFING. FOR BIDDING PURPOSES, BASIS OF DESIGN SHALL BE THOROSEAL 581.
DESCRIPTION: PORTLAND CEMENT BASED COATING FOR CONCRETE AND MASONRY THAT RESISTS AIR INFILTRATION AND HYDROSTATIC PRESSURE.

KEYNOTES

KEY VALUE	KEYNOTE TEXT
#0000 B	CONCRETE SLAB- SEE 'S' SHEETS
#0000 C	CONCRETE FOOTING- SEE 'S' SHEETS
#0000 D	VAPOR BARRIER
#0000 N	BITUMINOUS FILLER STRIP
#0000 O	12IN. CMU
#0000 F	GROUT
#0000 D01	DAMP-PROOFING
#0000 O	BRICK VENEER
#0000 X	12 IN. CMU-BOND BEAM
#0000 Y	VENEER ANCHOR
#0000 M	JOIST S/C DETAIL - SEE 'S' SHEETS
#0000 B	3/8IN. COAL FORMED METAL FRAMING
#0000 G	2" GUTTER DRAINING CHANNEL
#0000 G	LAMB'S TONGUE DOWNSPOUT NOZZLE
#0000 K	5/8 IN. PLYWOOD SHEATHING (EXTERIOR GRADE)
#0000 A	FLUORID POLYSTYRENE RIGID INSULATION
#0000 A	
#0000 A	FLUID-APPLIED MEMBRANE AIR BARRIERS
#1113 H	SELF-ADHERING SHEET UNDERLAYMENT
#1113 I	STANDING SEAM METAL ROOF
#1113 P	COVER BOARD
#1113 Q	STANDING SEAM METAL WALL PANEL
#1116 B	ALUMINUM FLANK SIDING - 6" V-GROOVE
#2000 B	PREFINISHED GUTTER
#2000 C	PREFINISHED DOWNSPOUT
#2113 B	PRE-FINISHED ALUM WINDOW PAN
#1116 G	2" X 12 IN. METAL STUD
#2000 B	CEMENT-BASED WATERPROOFING
#2000 B	18 IN. GWB
#3113 A	CONCRETE PAVING

06/25	3	ADDENDUM #3
-------	---	-------------

CONTRACT DOCUMENTS

CLARENDON COUNTY
EMERGENCY MANAGEMENT &
911 COMMUNICATIONS
DISPATCH CENTER

PROJECT NUMBER: ITB 2024-006
1091 CAPITAL WAY
MANNING, SC 29102



1643 MEANS STREET
CHARLESTON, SC 29412
843.577.6073

WALL SECTIONS

EFT NAM

PROJECT NUMBER

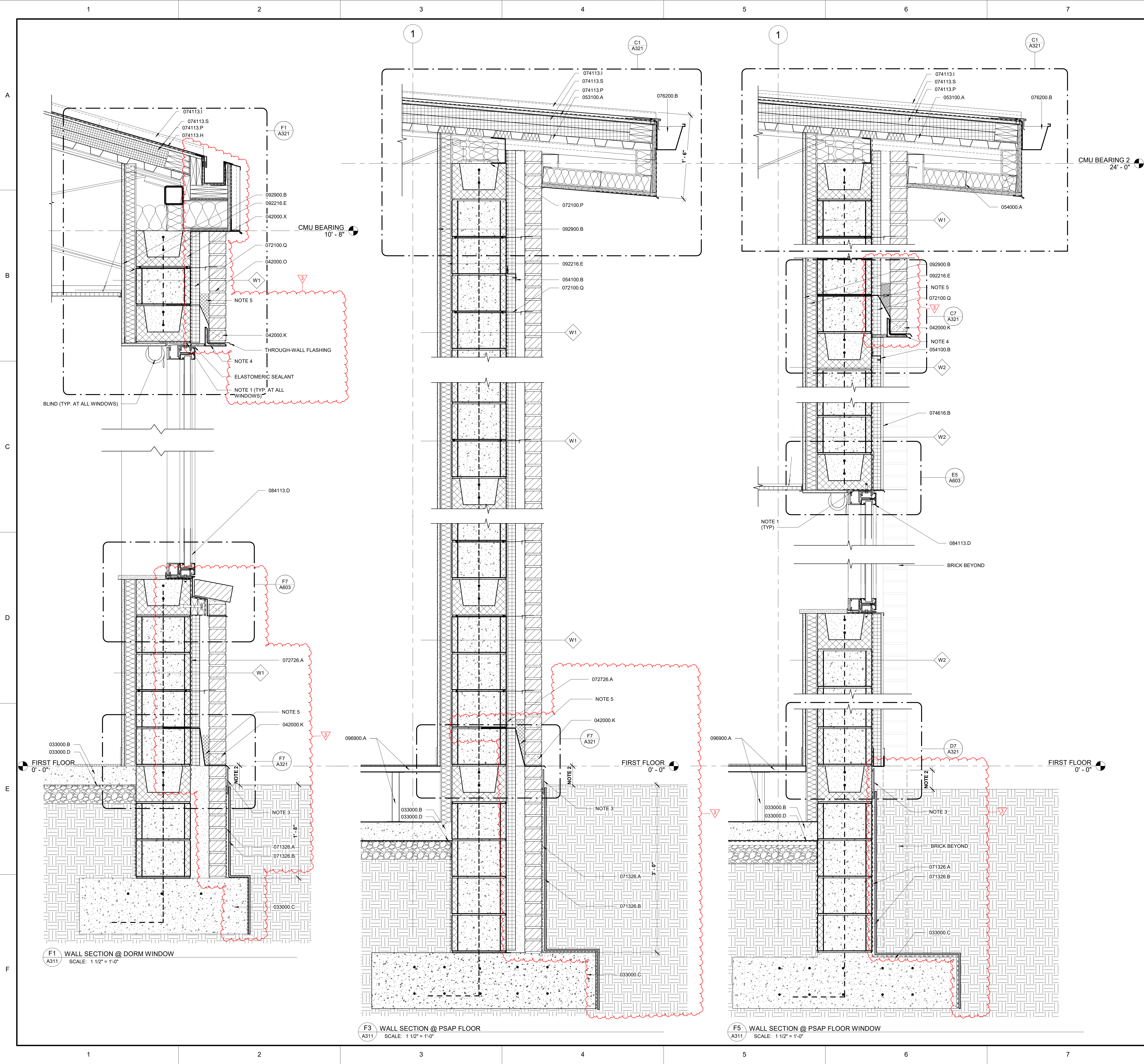
Auth

05.01.2025

SALE

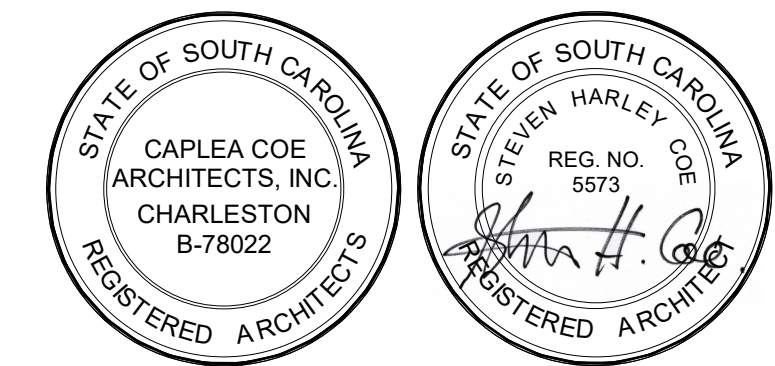
A310

6/5/2025 11:59:10 AM



KEYNOTES

KEY VALUE	KEYNOTE TEXT
033000.B	CONCRETE SLAB- SEE 'S' SHEETS
033000.C	CONCRETE FOOTING- SEE 'S' SHEETS
033000.D	VAPOR BARRIER
042000.K	MASONRY WEEP
042000.O	BRICK VENEER
042000.X	12 IN. CMU-BOND BEAM
053100.A	STEEL DECKING - SEE 'S' SHEETS
054000.A	COLD FORM METAL FRAMING SEE 'S' SHEETS
054100.B	2" GALV. 2" FURRING CHANNEL
071326.A	SELF-ADHERED SHEET WATERPROOFING
071326.B	MOLDED SHEET DRAINAGE PANEL
072100.P	MINERAL WOOL INSULATION
072100.Q	EXTRUDED POLYSTYRENE RIGID INSULATION
072726.A	FLUID-APPLIED MEMBRANE AIR BARRIERS
074113.H	SELF-ADHERING SHEET UNDERLAYMENT
074113.I	STANDING SEAM METAL ROOF
074113.P	COVER BOARD
074113.S	GLASS-MAT FACED POLYISO BOARD INSULATION
074616.B	ALUMINUM PLANK SIDING - 6" V-GROOVE
076200.B	PREFINISHED GUTTER
084113.D	PRE FINISHED ALUMINUM BRAKE METAL SILL
092216.E	2-1/2 IN. METAL STUD
092900.B	5/8 IN. GWB
096900.A	ACCESS FLOORING



© COPYRIGHT 2025 CAPLEA COE ARCHITECTS, INC.
THIS DRAWING HAS BEEN PREPARED BY CAPLEA COE ARCHITECTS, INC. FOR THE PROJECT AND IS AN INSTRUMENT OF THE ARCHITECT'S SERVICE FOR THE USE SOLELY WITH RESPECT TO THIS PROJECT. THE ARCHITECT SHALL BE DEEMED THE AUTHOR OF THIS DOCUMENT AND SHALL RETAIN ALL COMMON LAW, STATUTORY AND OTHER RESERVED RIGHTS, INCLUDING THE COPYRIGHT.

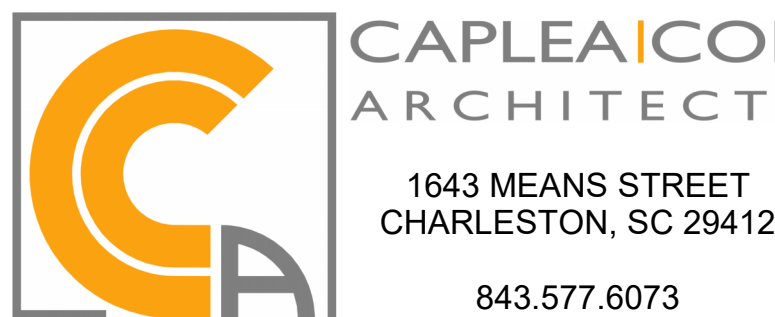
- NOTES:
1. FILL GAPS @ PERIMETER OF WINDOWS WITH EXPANDING SPRAY FOAM
 2. MAINTAIN 4" CLEAR TO GRADE
 3. CEMENT BASED WATERPROOFING FOR BIDDING PURPOSES. ASSUME THROUGH SEAL 581 PORTLAND-CEMENT BASED COATING FOR POSITIVE AND NEGATIVE HYDROSTATIC PRESSURE. EXTEND 2" BELOW GRADE.
 4. PROVIDE GALV. LOOSE LINTEL WITH CLOSURE PLATE - GRIND WELD SMOOTH AND PAINT
 5. MORTAR MESH AT ALL THROUGH WALL FLASHING, TYP

6/06/25	3	ADDENDUM #3
REVISIONS		

CONTRACT DOCUMENTS

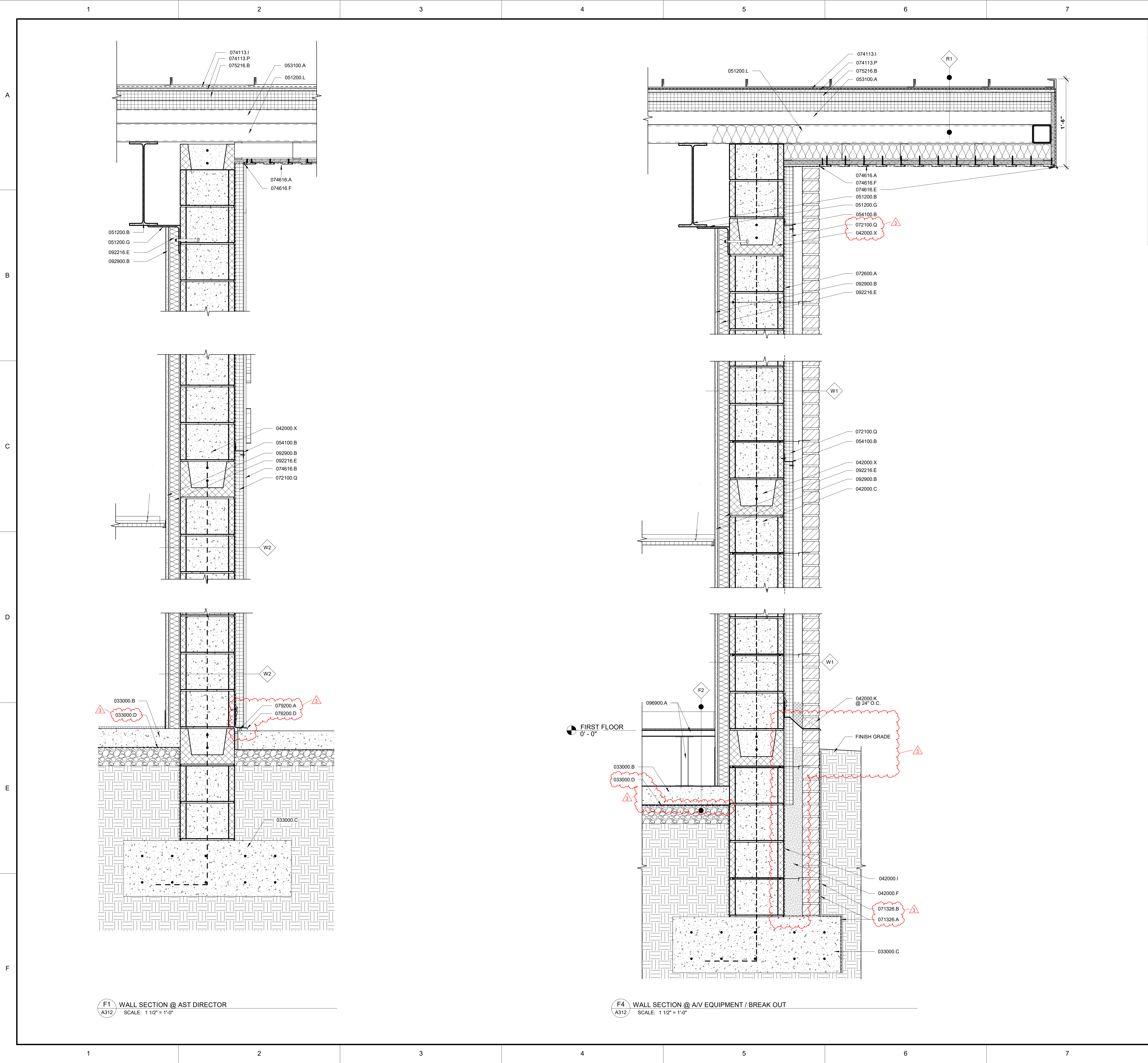
CLARENDON COUNTY
EMERGENCY MANAGEMENT &
911 COMMUNICATIONS
DISPATCH CENTER

PROJECT NUMBER: ITB 2024-006
1091 CAPITAL WAY
MANNING, SC 29102



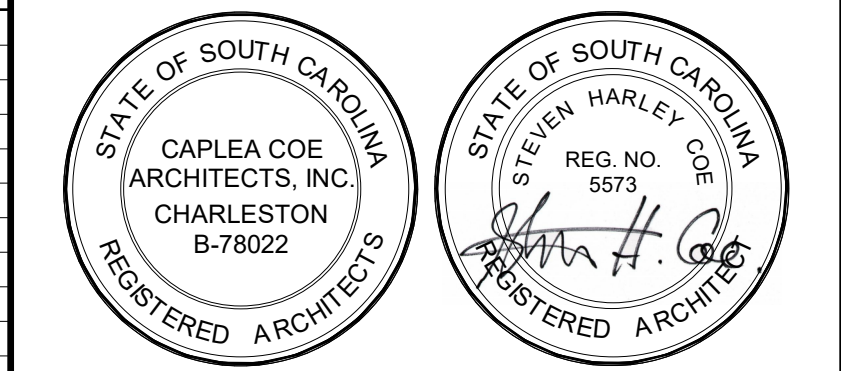
WALL SECTIONS

SHEET NAME	A311
PROJECT NUMBER	
24001	
DRAWN BY	
Author	
CHECKED BY	Approver
DATE	
05.01.2025	
SCALE	1 1/2" = 1'-0"
6/6/2025 11:39:51 AM	



KEYNOTES

KEY VALUE	KEYNOTE TEXT
033000.B	CONCRETE SLAB- SEE 'S' SHEETS
033000.C	CONCRETE FOOTING- SEE 'S' SHEETS
033000.D	VAPOR BARRIER
042000.C	12IN. CMU
042000.F	GROUT
042000.I	DAMP-PROOFING
042000.K	MASONRY WEEP
042000.X	12 IN. CMU-BOND BEAM
051200.B	STEEL BEAM SEE 'S' SHEETS
051200.G	STEEL ANGLE - SEE 'S' SHEETS
051200.L	STRUCTURAL STEEL TUBE
053100.A	STEEL DECKING - SEE 'S' SHEETS
054100.B	2" GALV. 7" FURRING CHANNEL
071326.A	SELF-ADHERED SHEET WATERPROOFING
071326.B	MOLDED SHEET DRAINAGE PANEL
072100.Q	EXTRUDED POLYSTYRENE RIGID INSULATION
072600.A	VAPOR BARRIER
074113.I	STANDING SEAM METAL ROOF
074113.P	COVER BOARD
074616.A	ALUMINUM PLANK SIDING - 4" CASTELLATION
074616.B	ALUMINUM PLANK SIDING - 6" V-GROOVE
074616.E	TWO PIECE J-TRACK
074616.F	STARTER STRIP
075216.B	POLISO BOARD INSULATION
076200.D	PREFINISHED METAL FLASHING
079200.A	JOINT SEALANTS
092216.E	2-1/2 IN. METAL STUD
092900.B	5/8 IN. GWB
096900.A	ACCESS FLOORING



© COPYRIGHT 2025 CAPLEA COE ARCHITECTS, INC.
THIS DRAWING HAS BEEN PREPARED BY CAPLEA COE ARCHITECTS, INC. FOR THE PROJECT AND IS AN INSTRUMENT OF THE ARCHITECT'S SERVICE FOR THE USE SOLELY WITH RESPECT TO THIS PROJECT. THE ARCHITECT SHALL BE DEEMED THE AUTHOR OF THIS DOCUMENT AND SHALL RETAIN ALL COMMON LAW, STATUTORY AND OTHER RESERVED RIGHTS, INCLUDING THE COPYRIGHT.

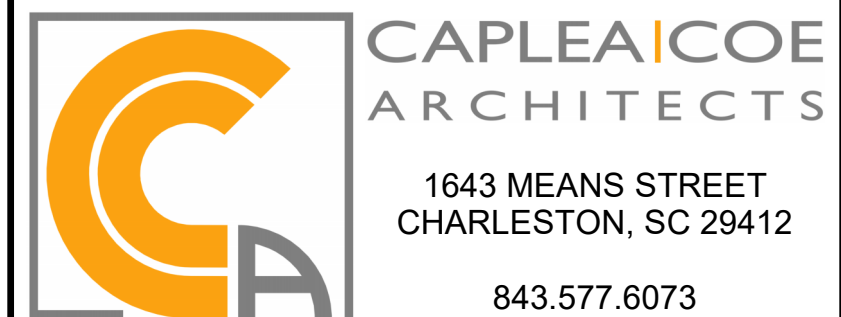
NOTES:

6/06/25	3	ADDENDUM #3
---------	---	-------------

CONTRACT DOCUMENTS

CLARENDON COUNTY
EMERGENCY MANAGEMENT &
911 COMMUNICATIONS
DISPATCH CENTER

PROJECT NUMBER: ITB 2024-006
1091 CAPITAL WAY
MANNING, SC 29102

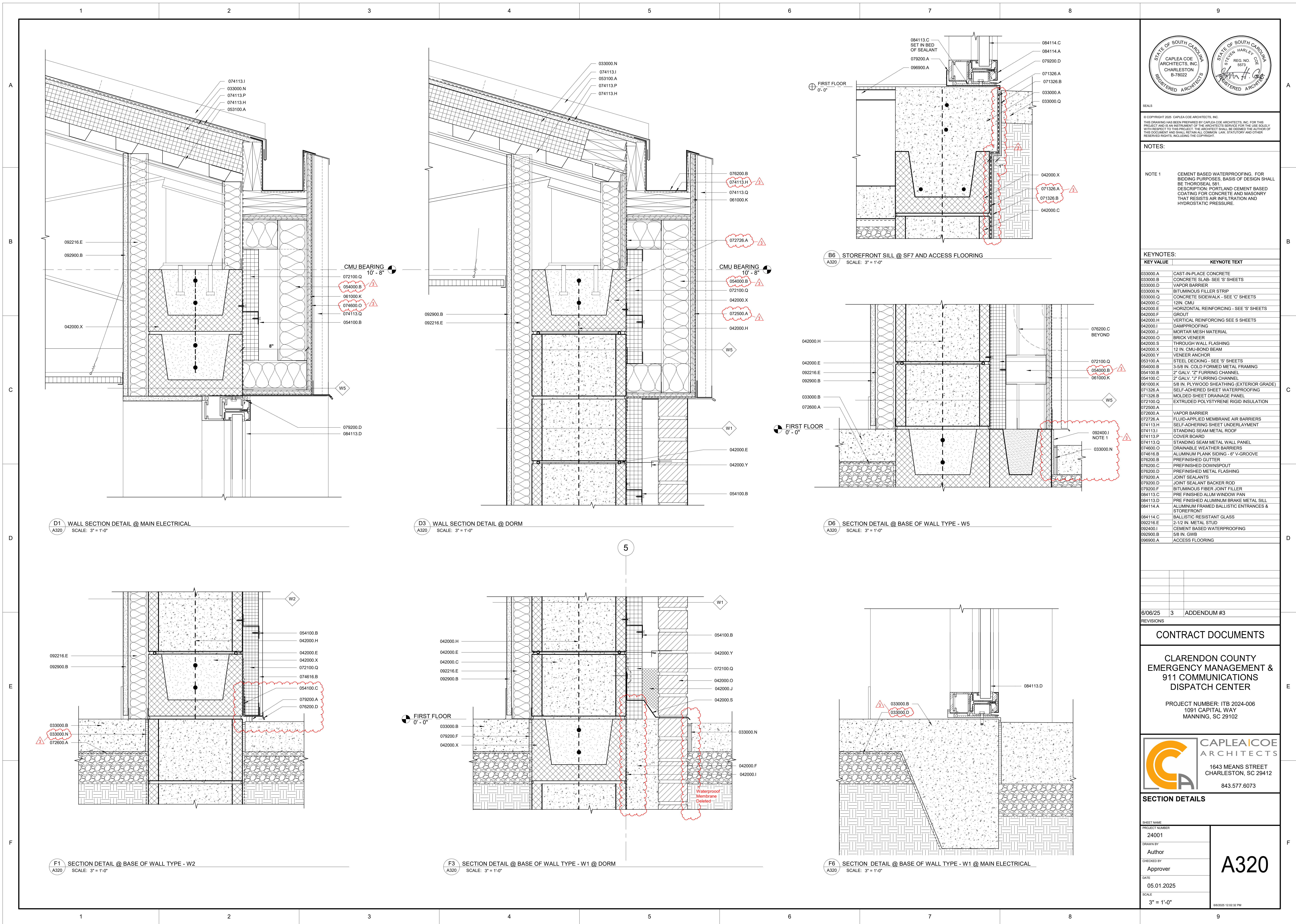


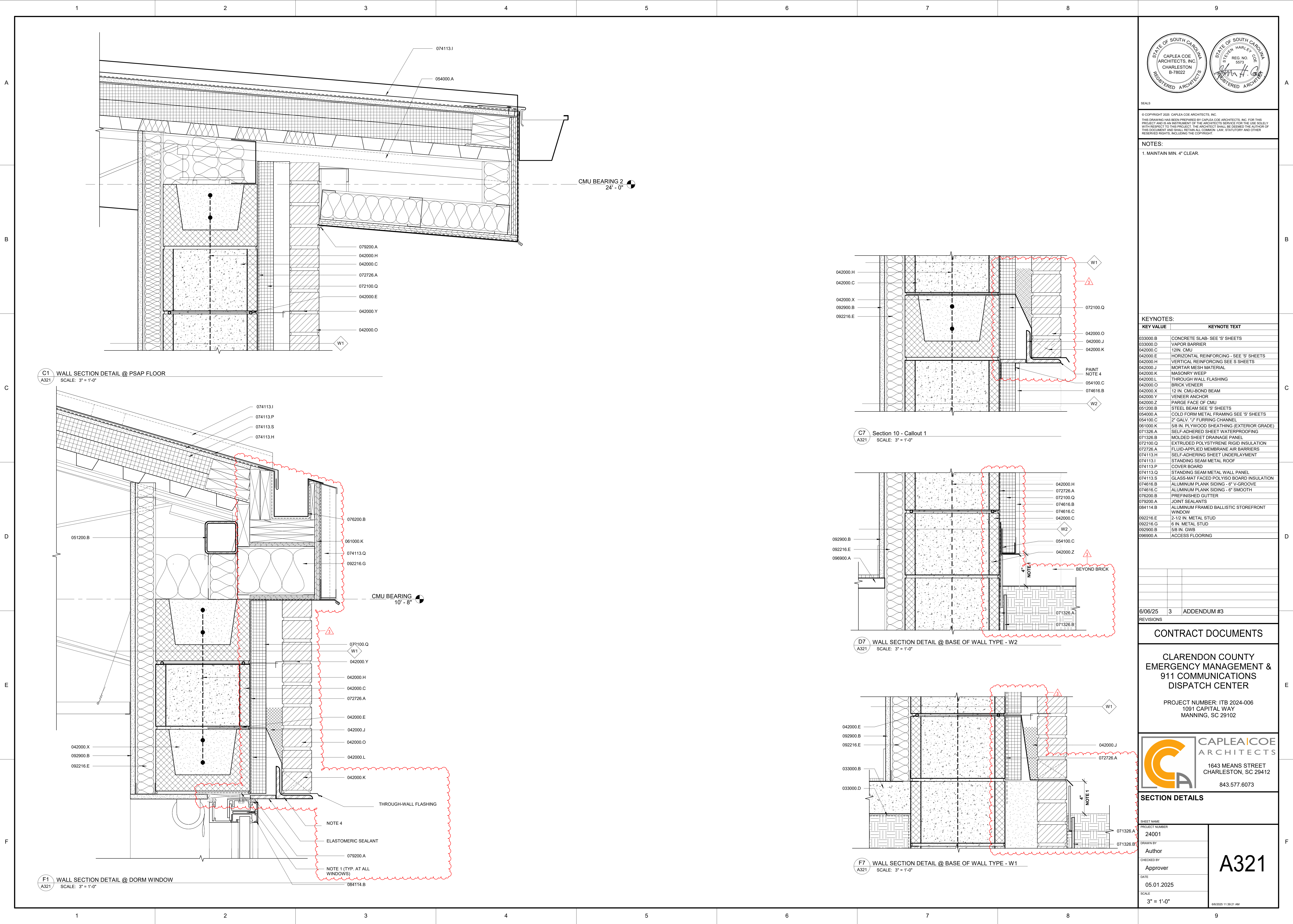
WALL SECTIONS

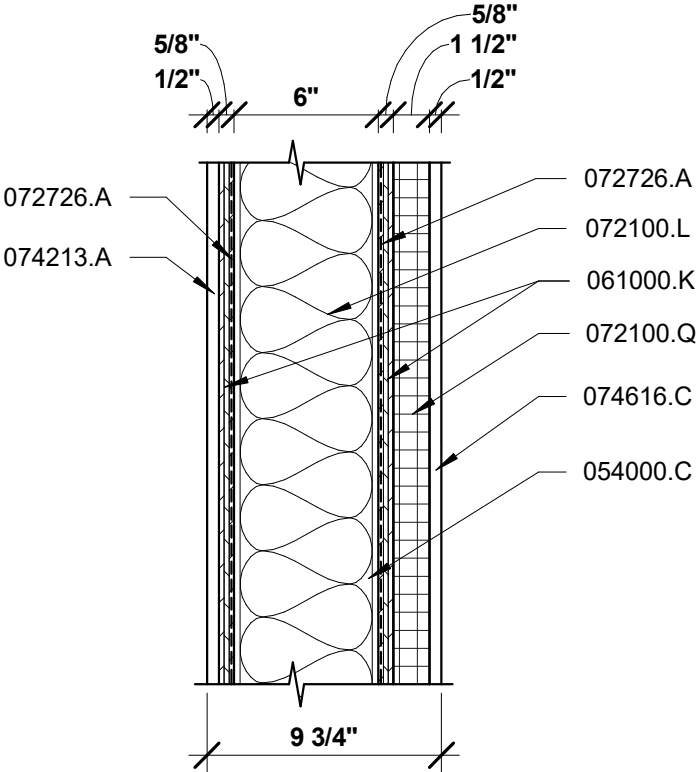
SHEET NAME	
PROJECT NUMBER	24001
DRAWN BY	Author
CHECKED BY	Approver
DATE	05.01.2025
SCALE	1 1/2" = 1'-0"

A312

6/6/2025 11:59:33 AM







1 WALL CONSTRUCTION TYPE W10
SK-01 SCALE: 1 1/2" = 1'-0"

KEYNOTES

KEY VALUE	KEYNOTE TEXT
054000.C	6 IN. COLD FORMED METAL FRAMING
061000.K	5/8 IN. PLYWOOD SHEATHING (EXTERIOR GRADE)
072100.L	SOUND ATTENUATION INSULATION
072100.Q	EXTRUDED POLYSTYRENE RIGID INSULATION
072726.A	FLUID-APPLIED MEMBRANE AIR BARRIERS
074213.A	ALUMINUM COMPOSITE WALL PANELS
074616.C	ALUMINUM PLANK SIDING - 6" SMOOTH

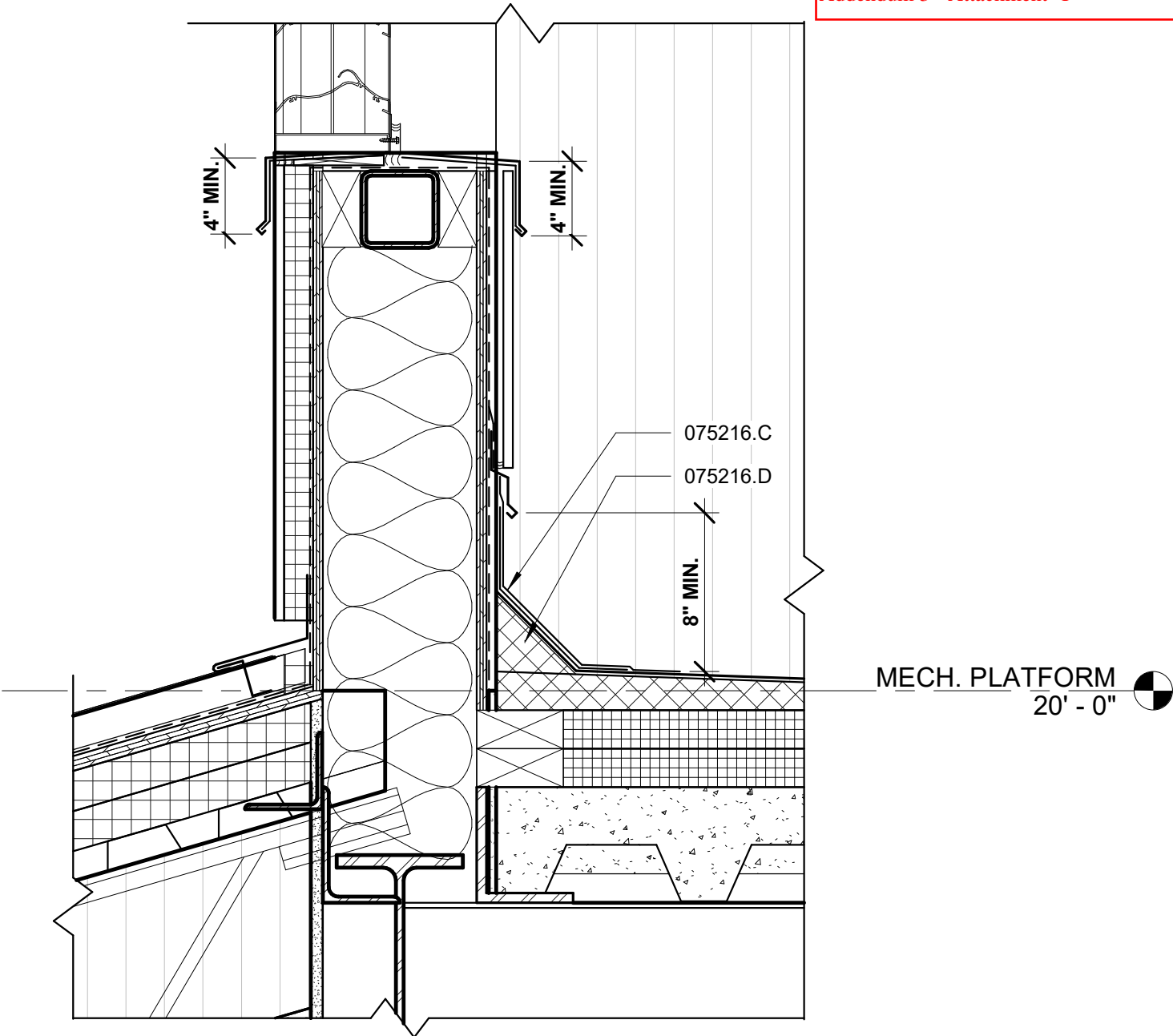


CLARENDON COUNTY
EMERGENCY MANAGEMENT &
911 COMMUNICATIONS
DISPATCH CENTER

PROJECT NUMBER: ITB 2024-006
1091 CAPITAL WAY
MANNING, SC 29102

ADDITIONAL INFORMATION FOR SHEET A623

24001	SK-01
BTN	
06/06/25	
	1 1/2" = 1'-0"



KEYNOTES

KEY VALUE	KEYNOTE TEXT
075216.C	BASE FLASHING
075216.D	FIBER CANT STRIP



CLARENDON COUNTY
EMERGENCY MANAGEMENT &
911 COMMUNICATIONS
DISPATCH CENTER

PROJECT NUMBER: ITB 2024-006
1091 CAPITAL WAY
MANNING, SC 29102

ADDITIONAL INFORMATION FOR F1/A313

24001	SK-02
BTN	
06/06/25	
	1 1/2" = 1'-0"